

**TREK**  
**METADATA**  
**USER GUIDE**



**January 2023**

Approved for Public Release; Distribution is Unlimited.

## TABLE OF CONTENTS

<u>PARAGRAPH</u>	<u>PAGE</u>
<b>1 Welcome.....</b>	<b>1</b>
1.1 Getting Started .....	1
<b>2 Technical Support.....</b>	<b>1</b>
<b>3 Introduction.....</b>	<b>1</b>
<b>4 Overview of the User Interface.....</b>	<b>4</b>
4.1 Main Window .....	4
4.2 Toolbar .....	5
4.3 Menus.....	5
<b>5 Quick Start Guides .....</b>	<b>6</b>
5.1 How to Create a Parameter Collection .....	6
5.2 How to Create a Database .....	6
5.3 How to View the List of Packets in a Database .....	6
5.4 How to Export a Packet from a Database.....	7
5.5 How to Add a Packet to a Database .....	7
5.6 How to Create a Limit Alarm.....	7
5.7 How to Create a Packet .....	8
5.8 How to Import Data from HOSC Partial Database Download Files Into a TReK Database.....	8
5.9 How to Import a GSE Packet Definition Into a TReK Database .....	9
5.10 How to add an EHS PDSS Payload Pass-Thru Packet to a TReK Database .....	9
<b>6 Details.....</b>	<b>9</b>
6.1 Parameter Collection .....	9
6.2 Format Collection.....	13
6.3 Random Packet Collection .....	17
6.4 Database .....	19
6.5 Limit Alarm.....	23
6.6 Expected State Alarm.....	24
6.7 Polynomial Calibrator .....	26
6.8 Spline Calibrator .....	29
6.9 Enumerator .....	31
6.10 Range Enumerator .....	33
6.11 Limit Alarm Switch Set.....	35
6.12 Expected State Alarm Switch Set .....	37
6.13 Calibrator Switch Set.....	40
6.14 Enumerator Switch Set .....	42
6.15 Packet .....	44
6.16 Export.....	48
6.17 Import.....	49
6.18 Parameter Details .....	50
6.19 Packet Attributes .....	51
6.20 Add EHS PDSS Payload Pass-Thru Packet to TReK Database .....	52
6.21 Convert EHS Partial Database Files Into TReK Database .....	54
6.22 Convert TReK Database Format .....	55
6.23 Export Metadata to CDEF.....	58
6.23.1 <i>General Tab</i> .....	59

6.23.2	<i>Packet List Tab</i> .....	60
6.24	Import Metadata from CDEF .....	60
6.24.1	<i>General Tab</i> .....	62
6.24.2	<i>ISS System Subsets Tab</i> .....	62
6.25	Command Data Exchange Format Information .....	63
6.25.1	<i>Export Differences</i> .....	64
6.25.2	<i>Import Differences</i> .....	64
6.26	User Defined C Structure .....	64
6.27	Application Messages .....	68
6.28	Application Configuration File .....	70
6.29	Application Settings .....	70
6.30	Application Command Line Arguments .....	70
<b>7</b>	<b>FAQ and Troubleshooting</b> .....	<b>71</b>

## FIGURES

<u>FIGURE</u>	<u>PAGE</u>
Figure 1 Packets, Parameter Collections, and Parameters .....	2
Figure 2 A Packet and Its Zones.....	2
Figure 3 Main Window .....	4
Figure 4 Main Window in Collection Configuration.....	10
Figure 5 Parameter Collection Drag and Drop .....	11
Figure 6 Collection with Parameter.....	12
Figure 7 Format Collection .....	14
Figure 8 Format Collection .....	16
Figure 9 Random Packet Collection.....	17
Figure 10 Random Packet Collection with Packet .....	18
Figure 11 Database Configuration.....	20
Figure 12 Database Packets Shown In List .....	21
Figure 13 Limit Alarm Configuration .....	23
Figure 14 Limit Alarm Level.....	24
Figure 15 Expected State Alarm Configuration .....	25
Figure 16 Polynomial Calibrator Configuration.....	26
Figure 17 Power Coefficient List Populate when Order is Set to 5 .....	28
Figure 18 Spline Calibrator Configuration .....	29
Figure 19 Spline Calibrator Information .....	30
Figure 20 Enumerator Configuration.....	31
Figure 21 Populated Enumerator .....	32
Figure 22 Range Enumerator Configuration .....	33
Figure 23 Populated Range Enumerator.....	34
Figure 24 Limit Alarm Switch Set Configuration .....	35
Figure 25 Populated Limit Alarm Switch Set.....	36
Figure 26 Expected State Alarm Switch Set Configuration .....	38
Figure 27 Populated Expected State Alarm Switch Set.....	39
Figure 28 Calibrator Switch Set Configuration.....	40
Figure 29 Populated Calibrator Switch Set .....	41
Figure 30 Enumerator Switch Set Configuration .....	42
Figure 31 Populated Enumerator Switch Set.....	44
Figure 32 Packet Configuration.....	45
Figure 33 Packet Drop Zones .....	46
Figure 34 Entire Packet Drop Zone Highlighted.....	46
Figure 35 Data Zone Drop Zone Highlighted.....	46
Figure 36 Packet Contents.....	47
Figure 37 Export Dialog.....	49
Figure 38 Import Dialog.....	49
Figure 39 Parameter Details Dialog .....	51
Figure 40 Packet Attributes Dialog .....	52
Figure 41 Add EHS PDSS Payload Pass-Thru Packet to TReK Database Dialog .....	53
Figure 42 Convert EHS Partial Database Files Into TReK Database Dialog .....	54
Figure 43 Convert TReK Database Format (Inside Workspace).....	56
Figure 44 Convert TReK Database Format (Outside Workspace) .....	56
Figure 45 Export Metadata to CDEF Dialog.....	58
Figure 46 Export Metadata to CDEF (Packet List Tab) .....	60
Figure 47 Import Metadata from CDEF .....	61
Figure 48 Import Metadata from CDEF (ISS System Subsets Tab).....	63
Figure 49 Messages Dialog .....	68
Figure 50 Configure Messages Dialog .....	69
Figure 51 Clear Messages Dialog.....	69

## 1 Welcome

The Telescience Resource Kit (TReK) is a suite of software applications and libraries that can be used to monitor and control assets in space or on the ground.

The TReK Metadata application provides the capability to create and manage telemetry and command metadata. This includes support for creating databases and metadata files and translating between different types of metadata formats.

The topics in this user guide require an understanding of the topics covered in the TReK Concepts document. Please be sure you have read the TReK Concepts document before reading this user guide.

### 1.1 Getting Started

Start with the Introduction which provides an application overview. Next, try the Quick Start Guides for “How Tos” for common functions. For help with details, reference the Details section. See the FAQ and Troubleshooting section for helpful hints and solutions to the common “gotchas”.

## 2 Technical Support

If you are having trouble installing the TReK software or using any of the TReK software, please contact us for technical assistance:

TReK Help Desk E-Mail, Phone & Fax:

E-Mail: [trek.help@nasa.gov](mailto:trek.help@nasa.gov)  
Telephone: 256-544-3521 (8:00 a.m. - 4:00 p.m. Central Time)  
Fax: 256-544-9353

If you call the TReK Help Desk and you get a recording please leave a message and someone will return your call. E-mail is the preferred contact method for help. The e-mail message is automatically forwarded to the TReK developers and helps cut the response time. The HOSC Help Desk (256-544-5066) can provide assistance as needed and is available 24x7.

## 3 Introduction

The TReK Metadata application provides the capability to create and manage telemetry and command metadata. This includes support for creating databases and metadata files and translating between different types of metadata formats. For a more detailed introduction to TReK metadata please reference the TReK Concepts document.

Packets are most often the data that are sent from one system to another system. Commands and telemetry are just packets. Command data is packets that tell another system to do something. Telemetry data is packets that supply information about the system sending the packet.

Parameters are the individual data values that contain information about the state of the sending system or actions to be taken by the receiving system. Parameters have a value and are either placed in the outgoing data or pulled from the incoming data. TReK uses the terms “build” to describe placing parameters in a packet and “extract” to describe pulling parameters from a packet.

Parameters are grouped with related parameters into collections named parameter collections. Parameter collections are the basic building blocks of packets which are the data sent from one system to another. Figure 1 has four views of the same packet. The first row shows a packet as a single entity that could be sent between systems. The second row shows that the packet is composed of parameter collections and another packet. The third row shows that eventually a packet will break down into a series of parameter collections. The final row shows that all parameter collections are a series of parameters. Each row is a different view of the same data.

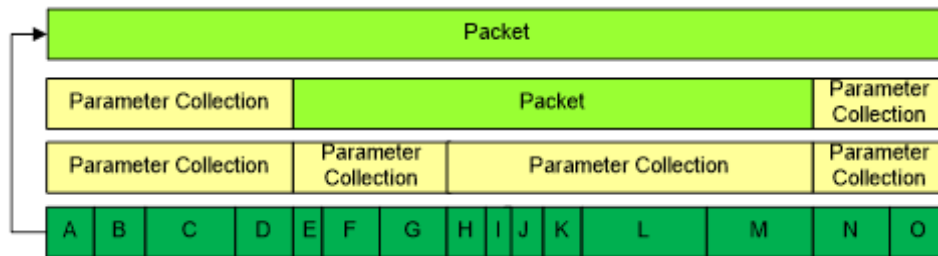


Figure 1 Packets, Parameter Collections, and Parameters

As mentioned earlier, Packets are the data that travel between systems. The packet is the largest aggregation of data in TReK.

Packets are divided into three zones: header, data, and trailer. One or more zones must be defined in a packet for it to be considered valid. Figure 2 shows each of the three zones and their relative locations. Each zone of a packet contains either another packet or a parameter collection.



Figure 2 A Packet and Its Zones

The first line in the figure above shows a packet that has all three zones defined. The second level shows that the header and trailer zone are composed of parameter collections which contain one or more parameters. The data zone is composed of another packet which only has the header and data zones defined. The third line shows that the packet in the data zone of the top level packet is composed of two parameter collections and that all of the data in a packet will eventually break down into a series of parameters.

The Metadata application provides the capability to create and modify a telemetry packet or a command packet. The application provides all the support needed to define the details for a Packet, Parameter Collection, and Parameters like those shown in Figure 1 and Figure 2. Once defined these packet definitions can then be used with various TReK applications to monitor and control an asset in space or on the ground.

Since there are many different ways to format metadata, TReK supports a variety of formats as described below.

#### C Programming Language Header File

Many software developers represent a packet definition using a C structure defined in a C header file. TReK can import the packet definition by reading the C structure defined in a C header file. See Section 6.26 for details.

#### Common Data Exchange Format (CDEF)

CDEF is an International Space Station (ISS) program format that contains metadata described using XML. It is used to exchange telemetry and command information between data systems. See Section 6.25 for details.

#### TReK Database

A TReK database is a SQLite database that can contain metadata information for one or more packets.

#### TReK Metadata File

This is a TReK generated file that contains metadata described using XML (e.g., a Packet definition, a Parameter Collection definition).

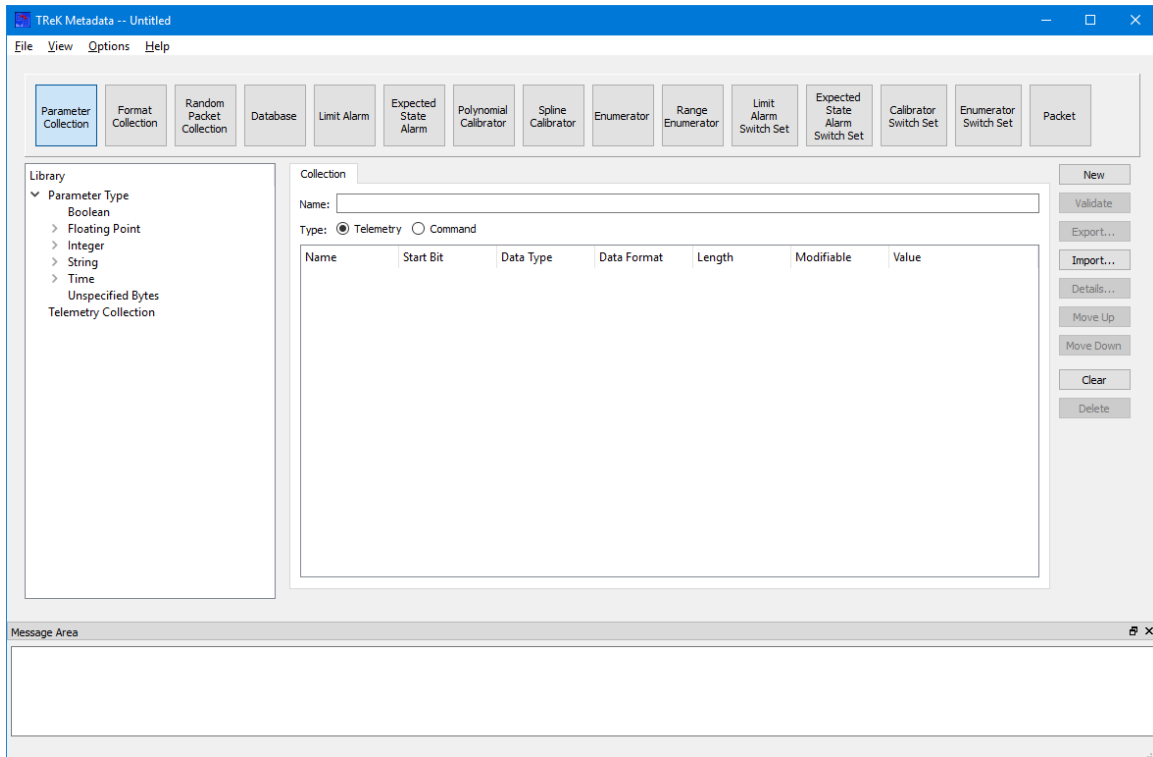
The Metadata application can read, write, and translate between these different types of formats.

The Metadata application also provides the capability to import metadata information obtained from the HOSC including metadata defined in Partial Database Download Files and Ground Support Equipment (GSE) packet definitions.

## 4 Overview of the User Interface

### 4.1 Main Window

The main window contains several areas as shown in Figure 3. The Toolbar contains multiple buttons that reconfigure the main window to focus on a specific metadata element such as a Parameter Collection, a Database, a Limit Alarm, a Packet, etc.



**Figure 3 Main Window**

#### Toolbar

The toolbar at the top of the window provides quick access to configure the main window to work on a specific metadata element.

#### Library Area

The Library Area is context sensitive and will be reconfigured to support the specific area you are working on. For example, if you are creating a Parameter Collection, the Library Area will be configured to show a list of all the types of parameters that you can add to a parameter collection. If you are working on a Database, the Library will be configured to show you a list of databases you can work with.

#### Work Area

The Work Area is context sensitive and will be reconfigured to support the specific type of element you are working on. If you are working on a Parameter Collection, the Work Area will display the Parameter Collection content. If you are working on a Database, the Work Area will display the list of packets in the Database you have selected. If you are working on a Limit Alarm, the Work Area will display the content of the Limit



Alarm. If you are working on a Packet, the Work Area will display the contents of the packet. The Work Area provides the capability to create or modify the contents of a specific element.

#### Button Area

The Button Area is context sensitive and will be reconfigured to display functions available for the specific area you are working on. For example, for a Parameter Collection, you would have functions such as creating a New Parameter Collection, Validating a Parameter Collection, Exporting the Parameter Collection (saving it in a file in a specified format), and Importing a Parameter Collection (reading a specified format from a file). There are also functions available to modify the order of parameters in the collection by moving them up and down in the list and deleting a parameter.

#### Message Area

The Message Area displays important status and error messages. The message area can be cleared using the View menu. The Message Area is a dock window that you can float or dock. To float a dock window, use your left mouse button to click and hold the title area while dragging the window to another area of the screen. To dock, use the title bar to drag the dock window over the main window and drop.

## **4.2 Toolbar**

The Toolbar contains multiple buttons that reconfigure the main window to focus on a specific metadata element such as a Parameter Collection or a Database.

## **4.3 Menus**

The Metadata application menus are: File, View, Options, and Help. Each of these menus is described in more detail below.

#### File Menu

The File menu provides the capability to manage configurations and exit the application.

#### View Menu

The View menu provides the capability to clear the main window message area and show and hide different areas in the main window.

#### Options Menu

The Options menu provides access to the Messages dialog and other special functions such as working with HOSC Partial Database Download files or Common Data Exchange Format files.

#### Help Menu

The Help menu provides access to on-line help and application version information.

## 5 Quick Start Guides

This section provides “How Tos” for common functions.

### 5.1 How to Create a Parameter Collection

The following steps describe the minimum necessary to create a Parameter Collection. For additional information and details please reference section 6.1.

1. Push the Collection button to configure the Work Area to create a Parameter Collection.
2. Enter a name for the Parameter Collection.
3. Select the Telemetry or Command radio button to specify whether the Parameter Collection will be a telemetry collection or a command collection.
4. Add one or more parameters to the Parameter Collection by dragging a Parameter Type from the Library Area and dropping it in the Parameter Collection List.
5. Enter the minimum information necessary to define a Parameter: Name, Start Bit, Data Type, and Length.
6. Validate the Parameter Collection.
7. Export the Parameter Collection to save a copy in a file.

### 5.2 How to Create a Database

The following steps describe the minimum necessary to create a TReK Database. For additional information and details please reference section 6.4.

1. Push the Database button to configure the Work Area to work with a TReK Database.
2. Select the Telemetry or Command radio button to specify whether the Database will be a telemetry database or a command database.
3. Push the New button and enter the name for the new Database. Once you push the OK button to close the New Database dialog, the Database will be opened and ready for editing in the Work Area.

### 5.3 How to View the List of Packets in a Database

The following are the minimum necessary steps to view the list of Packets in a TReK Database. For additional information and please reference section 6.4.

1. Push the Database button to configure the Work Area to work with a TReK Database.
2. Select the Telemetry or Command radio button to indicate the type of Database. The Library will reconfigure to list the selected type of databases.
3. Select a Database item in the Library and drag it to the Name field and drop it. The packets in the Database will be displayed in the list.

Note: The Library displays telemetry databases that reside in the TReK workspace telemetry\_database folder and command databases that reside in the command\_database folder.

#### **5.4 How to Export a Packet from a Database**

This section describes how to export a packet definition from a TReK Database. For additional information and details please reference section 6.4.

1. Push the Database button to configure the Work Area to work with a TReK Database.
2. Select the Telemetry or Command radio button to indicate the type of Database. The Library will reconfigure to list the selected type of databases.
3. Select a Database item in the Library and drag it to the Name field and drop it. The packets in the Database will be displayed in the list.
4. Select a Packet in the list and push the Export button.
5. In the Export dialog, select a Format, enter the required information and push OK to export the packet definition.

#### **5.5 How to Add a Packet to a Database**

This section describes how to add a packet definition to a TReK Database using the TReK Database ASCII file format. For additional information and details please reference section 6.4.

1. Push the Database button to configure the Work Area to work with a TReK Database.
2. Select the Telemetry or Command radio button to indicate the type of Database. The Library will reconfigure to list the selected type of databases.
3. Select a Database item in the Library and drag it to the Name field and drop it. Any packets in the Database will be displayed in the list.
4. Push the Import button to add a packet to the database.
5. In the Import dialog select the “Packet Definition in ASCII File Format” option and browse to select the file(s) describing the packet and then push the Import button. If the packet was successfully imported it will appear in the list or an error message will be displayed.

#### **5.6 How to Create a Limit Alarm**

The following steps describe the minimum necessary to create a Limit Alarm. For additional information and details please reference section 6.5.

1. Push the Limit Alarm button to configure the Work Area to create a Limit Alarm.
2. Enter a name for the Limit Alarm.
3. Enter a type for the Limit Alarm.
4. Enter the information for one or more levels in the Limit Alarm.
5. Validate the Limit Alarm.
6. Export the Limit Alarm to save a copy in a file.

## 5.7 How to Create a Packet

The following steps describe the minimum necessary to create a Packet. For additional information and details please reference section 6.15.

1. Push the Packet button to configure the Work Area to create a Packet.
2. Enter a name for the Packet.
3. Select the Telemetry or Command radio button to specify whether the Packet will be a telemetry packet or a command packet.
4. Drag and drop items from the library into the Packet definition area to construct the packet. For example, start the packet definition by using a predefined packet template. Then add or update the packet zones to create a custom packet. [Hint: You can drag item such as collections to the individual drop zones such as the Header drop zone, Data drop zone, or Trailer drop zone, or you can right click on a Header, Data, or Trailer in the packet definition to get a pop-up menu to Add, Replace, or Delete the contents of a zone.
5. Validate the Packet.
6. Export the Packet to save a copy in a file.

## 5.8 How to Import Data from HOSC Partial Database Download Files Into a TReK Database

The following steps describe the minimum necessary to import data from HOSC Partial Database Download files into a TReK database. The data must be imported into a new TReK database. For additional information and details please reference section 6.15.

1. Go to the Options menu and select 'Convert EHS Database Files to TReK Database'.
2. In the Convert EHS Database Files to TReK Database dialog select Telemetry or Command based on the type of data to import.
3. In the TReK Database Information area, enter the name and directory for the new TReK database that will be created to hold the information from the EHS database files.
4. In the EHS Partial Database File Information, enter the information that identifies where the EHS partial Database files can be found.

Note: Filenames for EHS Partial Database files with telemetry information contain a prefix number. This number should be entered in the Prefix field.

5. Push the Convert button to execute the import. Messages related to the convert process will be displayed in the Results area. The process can take a while if the EHS partial database files contain a large amount of data. You can continue to work on other tasks in the application while the convert is in work.

## 5.9 How to Import a GSE Packet Definition Into a TReK Database

This section describes how to import a HOSC Ground Support Equipment (GSE) packet definition into a TReK Database. Information about GSE packets can be found in the Payload to Generic User Interface Definition Document (PGUIDD).

1. Push the Database button to configure the Work Area to work with a TReK Database.
2. Select the Telemetry radio button. The Library will reconfigure to list telemetry databases.
3. You can add the GSE packet definition to a new Telemetry Database or to an existing Telemetry Database listed in the library.
  - To create a new database
    - a. Push the New Button.
    - b. Enter a name for the new database and push OK.
  - To select an existing Telemetry Database, select the item in the Library and drag it to the Name field and drop it. Any packets in the Database will be displayed in the list.
4. Push the Import button to add a packet to the database.
5. In the Import dialog select the “EHS GSE Packet File in ASCII File Format” option and browse to select the file(s) describing the GSE packet and then push the Import button. If the packet was successfully imported it will appear in the list or an error message will be displayed.

## 5.10 How to add an EHS PDSS Payload Pass-Thru Packet to a TReK Database

This section describes how to add an EHS PDSS pass-thru packet to a TReK Database. If your packet is defined as a pass-thru packet, you can use the TReK API to retrieve the header parameters or the data zone portion of the packet, but not any of the individual parameters in the data zone of the packet. Once you have added a pass-thru packet to a TReK Database, you can use capabilities on the Metadata application’s Database tab to export the packet definition to a TReK metadata file.

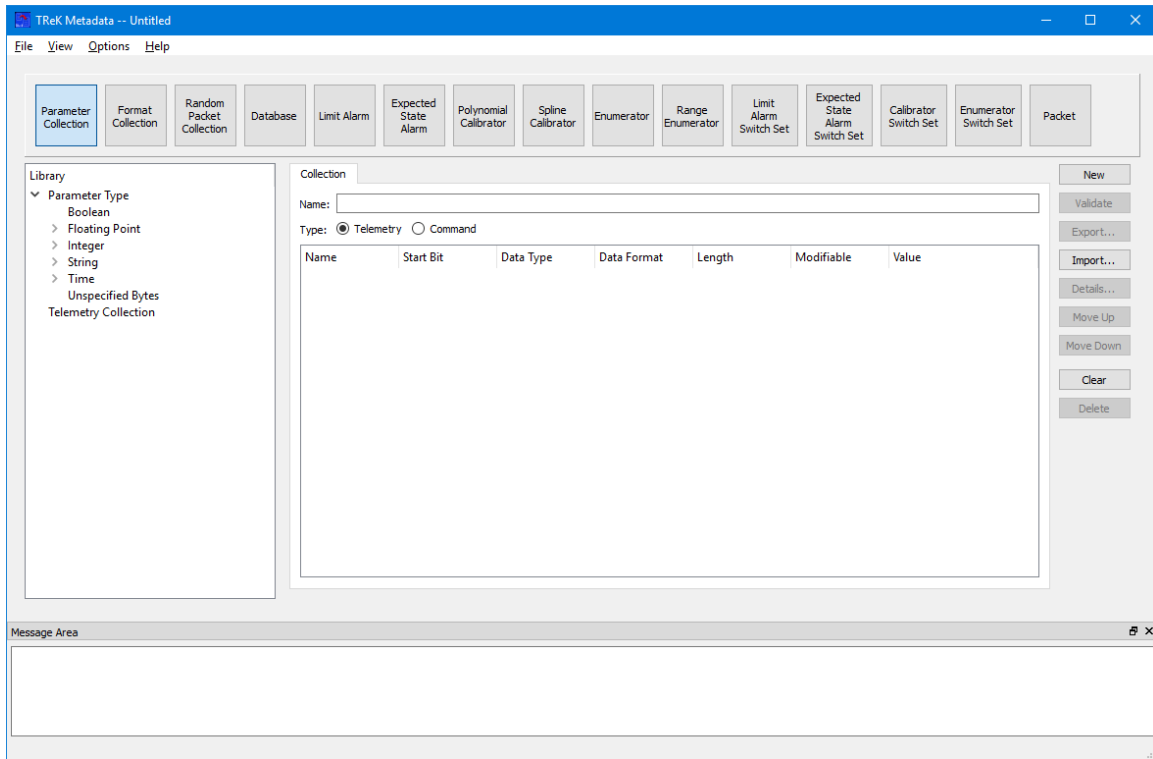
1. Go to the Options menu and select ‘Add EHS PDSS Payload Pass-Thru Packet to TReK Database’.
2. In the ‘Add EHS PDSS Payload Pass-Thru Packet to TReK Database’ dialog, enter the database information. You can use an existing database or create a new database.
3. In the Packet Information area, enter the APID for your packet.
4. Push the Apply button. The results will be displayed in the Results area.

## 6 Details

This section covers various application details.

### 6.1 Parameter Collection

The Parameter Collection configuration provides the capability to work with a Parameter Collection. Figure 4 shows the Main Window with the Parameter Collection configuration.



**Figure 4 Main Window in Collection Configuration**

On the left hand side of the Main Window you will see the Library Area. It is configured to provide access to items you can use to create a Parameter Collection. The Parameter Type list provides a list of all the parameter types that can be added to a Parameter Collection. The Telemetry Collection or Command Collection list is configured to provide access to existing Parameter Collections stored in the `trek_workspace`. When you create a Parameter Collection and export it to the `trek_workspace`, it will automatically be added to the Parameter Collection list. The Library Area only displays items stored in the `trek_workspace`. If you need to work on an item outside of the `trek_workspace`, you will need to import the item. In the middle of the Main Window you will see the Work Area showing the Collection Tab. This is where you will define the details of your Parameter Collection. On the right hand side of the Main Window you will see a set of buttons that provide various capabilities applicable to the Parameter Collection you are working on (e.g., Validate to validate the Parameter Collection or Export to export the Parameter Collection).

The Work Area provides the capability to define the following properties for the Parameter Collection:

#### Name

The name field is used to enter the name of the Parameter Collection.

## Type

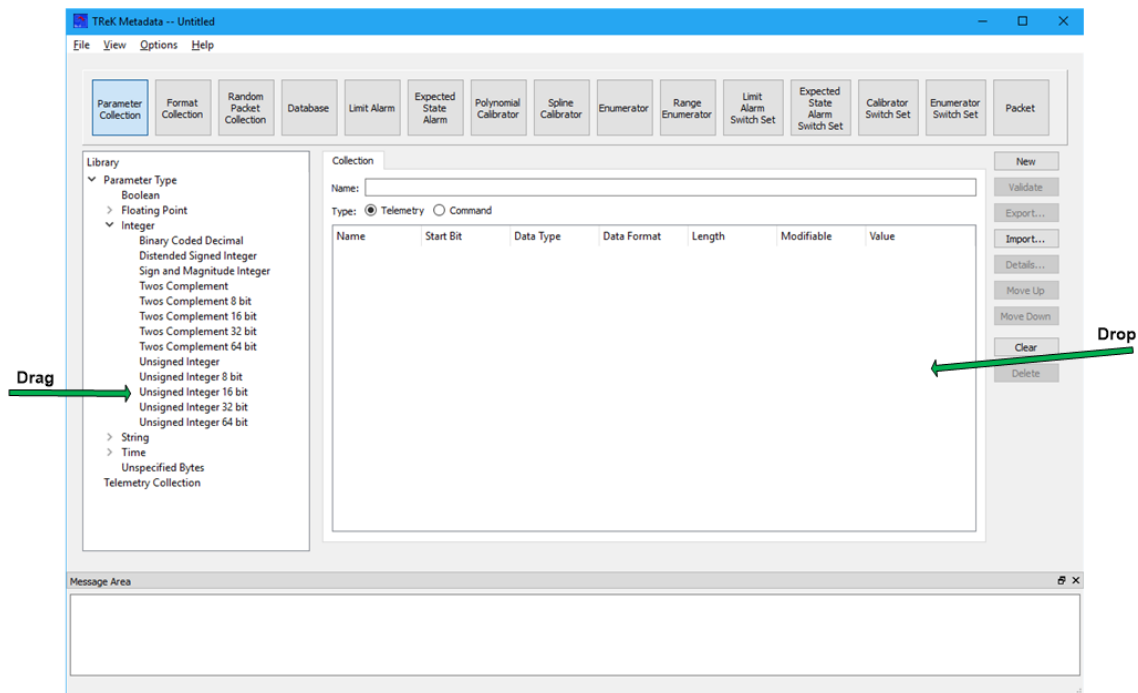
The type selection is used to identify the type of Parameter Collection: Telemetry or Command.

## Parameter List

The Parameter List is used to identify the parameters in the Parameter Collection.

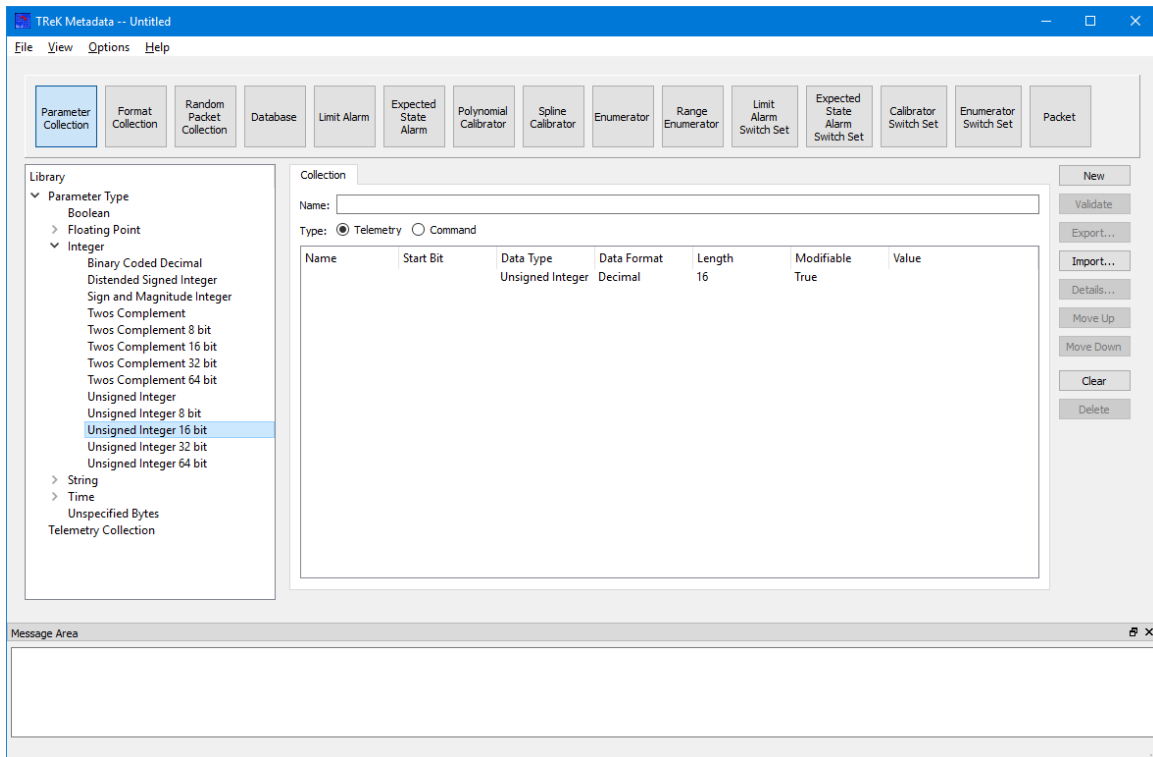
The Metadata application uses Drag and Drop to move items from the Library Area into the Work Area.

To add a parameter, use your left mouse button to select a parameter from the Library Parameter Type list, and while holding the left mouse button down, drag the item to the Work Area and drop it as shown by the green arrows in Figure 5.



**Figure 5 Parameter Collection Drag and Drop**

After dropping the parameter, you should see the parameter in the list as shown in Figure 6.



**Figure 6 Collection with Parameter**

To modify an existing Parameter Collection, you can drag the collection from the Telemetry Collection list or the Command Collection list and drop it in the Name field. This will load the Parameter Collection information into the Work Area.

#### Collection Drag and Drop Tips and Tricks

- If you drop an item from the Parameter Type list anywhere on the list it will be placed at the end of the list.
- If you drop an item from the Parameter Type list on top of another item, the item will be placed below that item in the list.
- If you drag an item from the Parameter Type list using the right mouse button, a dialog will pop up asking how many of that item you would like to add to the list. [This is only available on Windows].
- If you drag an item from a Telemetry Collection list or Command Collection list and drop it in the Name field, the Parameter Collection information will be loaded into the Work Area.

The following functions are available when working with a Parameter Collection:

#### New

New provides the capability to clear the existing Parameter Collection information.



### Validate

Validate provides the capability to validate the Parameter Collection information.

### Export

Export provides the capability to save the Parameter Collection to a file.

### Import

Import provides the capability to load a Parameter Collection from a file. When a Parameter Collection is imported the collection information is displayed on the Collection tab. To store any modifications back to the file, the Parameter Collection must be exported.

### Details

Details provides the capability to view and modify the properties associated with a selected parameter.

### Move Up

Move Up provides the capability to move a selected parameter up in the list.

### Move Down

Move Down provides the capability to move a selected parameter down in the list.

### Clear

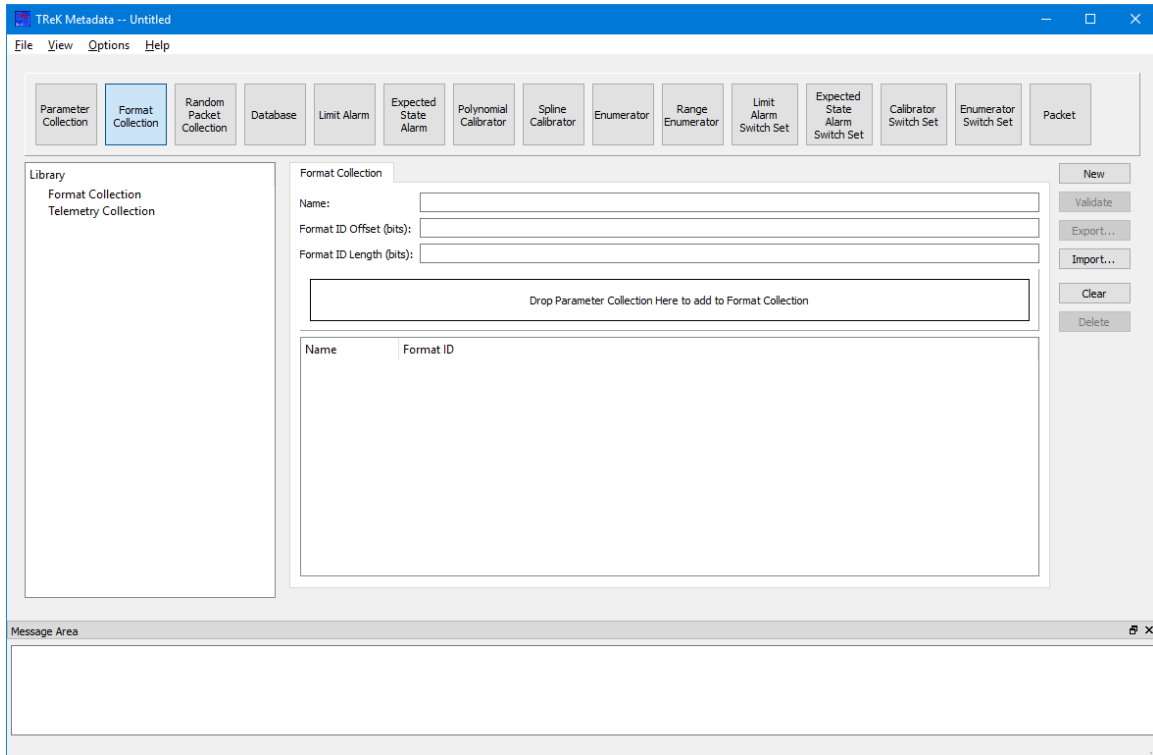
Clear provides the capability to clear the Work Area.

### Delete

Delete provides the capability to delete a selected parameter.

## **6.2 Format Collection**

The Format Collection configuration provides the capability to work with a Format Collection. Figure 7 shows the Main Window with the Format Collection configuration. Format Collections can be used to define a collection that contains multiple formats.



**Figure 7 Format Collection**

On the left hand side of the Main Window you will see the Library Area. It is configured to provide access to items you can use to create a Format Collection. The Telemetry Collection list provides a list of telemetry collections that can be used to select a collection to add to a Format Collection. The Format Collection list is configured to provide access to existing Format Collections stored in the `trek_workspace`. When you create a Format Collection and export it to the `trek_workspace`, it will automatically be added to the Format Collection list. The Library Area only displays items stored in the `trek_workspace`. If you need to work on an item outside of the `trek_workspace`, you will need to import the item. In the middle of the Main Window you will see the Work Area showing the Format Collection Tab. This is where you will define the details of your Format Collection. On the right hand side of the Main Window you will see a set of buttons that provide various capabilities applicable to the Format Collection you are working on (e.g., Validate to validate the Format Collection, Export to export the Format Collection, etc.).

The Work Area provides the capability to define the following properties for the Format Collection:

Name

The name field is used to enter the name of the Format Collection.

Format ID Offset

The format ID offset field is used to enter the offset of the Format ID in the Format Collection.

Format ID Length

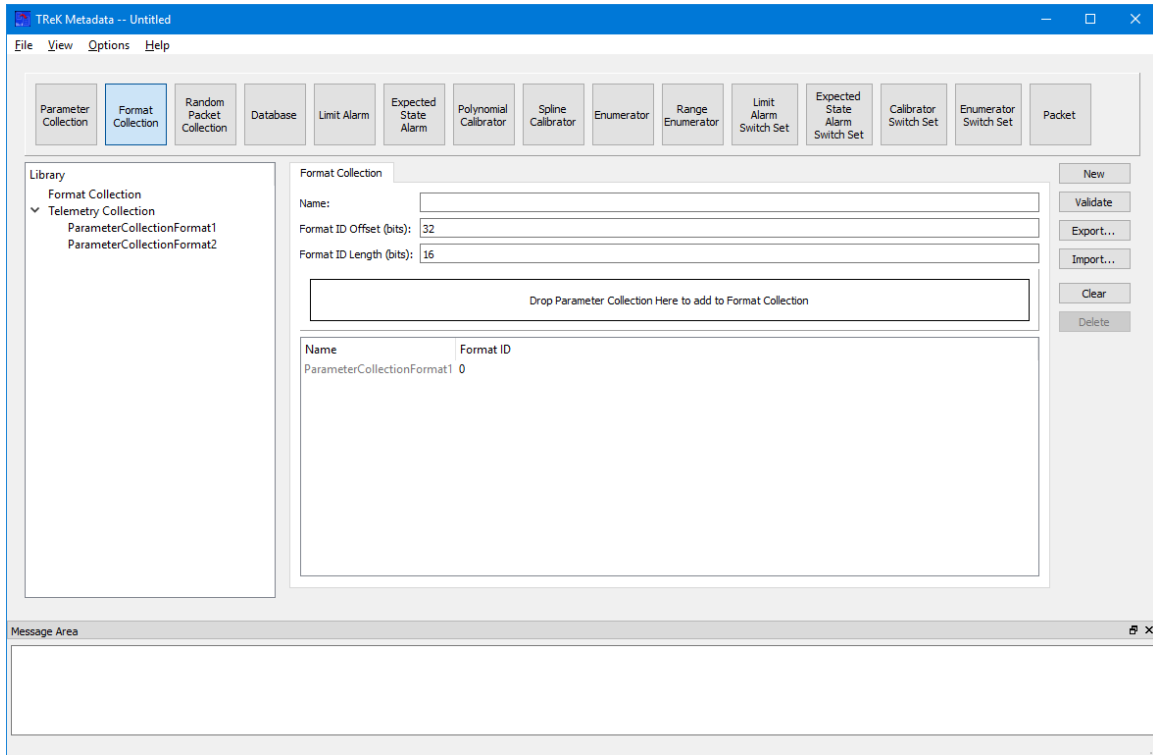
The format ID length field is used to enter the length of the Format ID in the Format Collection.

Collection Drop Zone

The Collection Drop Zone is used to add collections to the Format Collection.

The Metadata application uses Drag and Drop to move items from the Library Area into the Work Area.

To add a collection to the Format Collection, use your left mouse button to select a collection from the Library Telemetry Collection list, and while holding the left mouse button down, drag the item to the Collection Drop Zone and drop it. The collection will be added to the Format Collection as shown in Figure 8. The Format ID Offset and Format ID Length fields must be populated with valid values before the collection can be added. Once the collection has been added to the list, the Format ID cell can be edited to enter the Format ID associated with the collection. The collection name will be the name that is defined in the collection and cannot be edited in the list.



**Figure 8 Format Collection**

The following functions are available when working with a Format Collection:

#### New

New provides the capability to clear the existing Format Collection information.

#### Validate

Validate provides the capability to validate the Format Collection information.

#### Export

Export provides the capability to save the Format Collection to a file.

#### Import

Import provides the capability to load a Format Collection from a file. When a Format Collection is imported the collection information is displayed on the Format Collection tab. To store any modifications back to the file, the Format Collection must be exported.

#### Clear

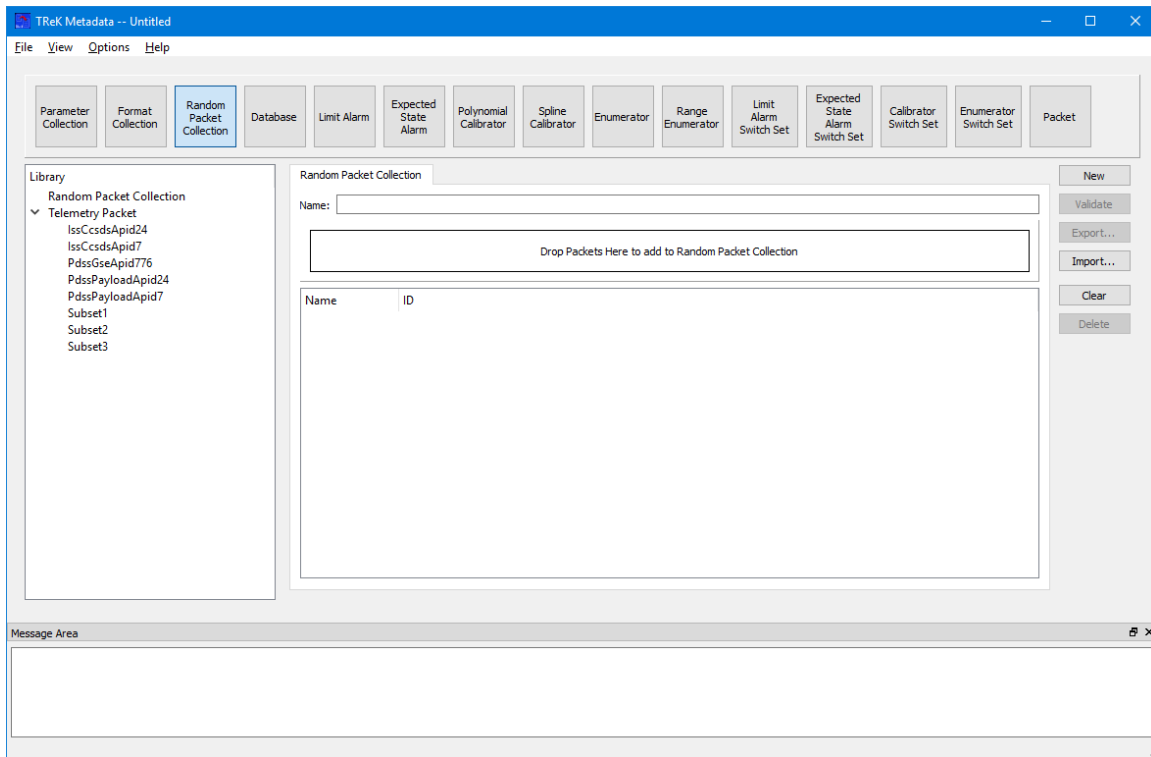
Clear provides the capability to clear the Work Area.

#### Delete

Delete provides the capability to delete a selected collection in the Format Collection.

### 6.3 Random Packet Collection

The Random Packet Collection configuration provides the capability to work with a Random Packet Collection. Figure 9 shows the Main Window with the Random Packet Collection configuration. Random Packet Collections can be used to process data that is random such as ISS health and status.



**Figure 9 Random Packet Collection**

On the left hand side of the Main Window you will see the Library Area. It is configured to provide access to items you can use to create a Random Packet Collection. The Telemetry Packet list provides a list of telemetry packets that can be used to select a packet to add to a Random Packet Collection. The Random Packet Collection list is configured to provide access to existing Random Packet Collections stored in the `trek_workspace`. When you create a Random Packet Collection and export it to the `trek_workspace`, it will automatically be added to the Random Packet Collection list. The Library Area only displays items stored in the `trek_workspace`. If you need to work on an item outside of the `trek_workspace`, you will need to import the item. In the middle of the Main Window you will see the Work Area showing the Random Packet Collection Tab. This is where you will define the details of your Random Packet Collection. On the right hand side of the Main Window you will see a set of buttons that provide various capabilities applicable to the Random Packet Collection you are working on (e.g., Validate to validate the Random Packet Collection, Export to export the Random Packet Collection, etc.).

The Work Area provides the capability to define the following properties for the Random Packet Collection:

### Name

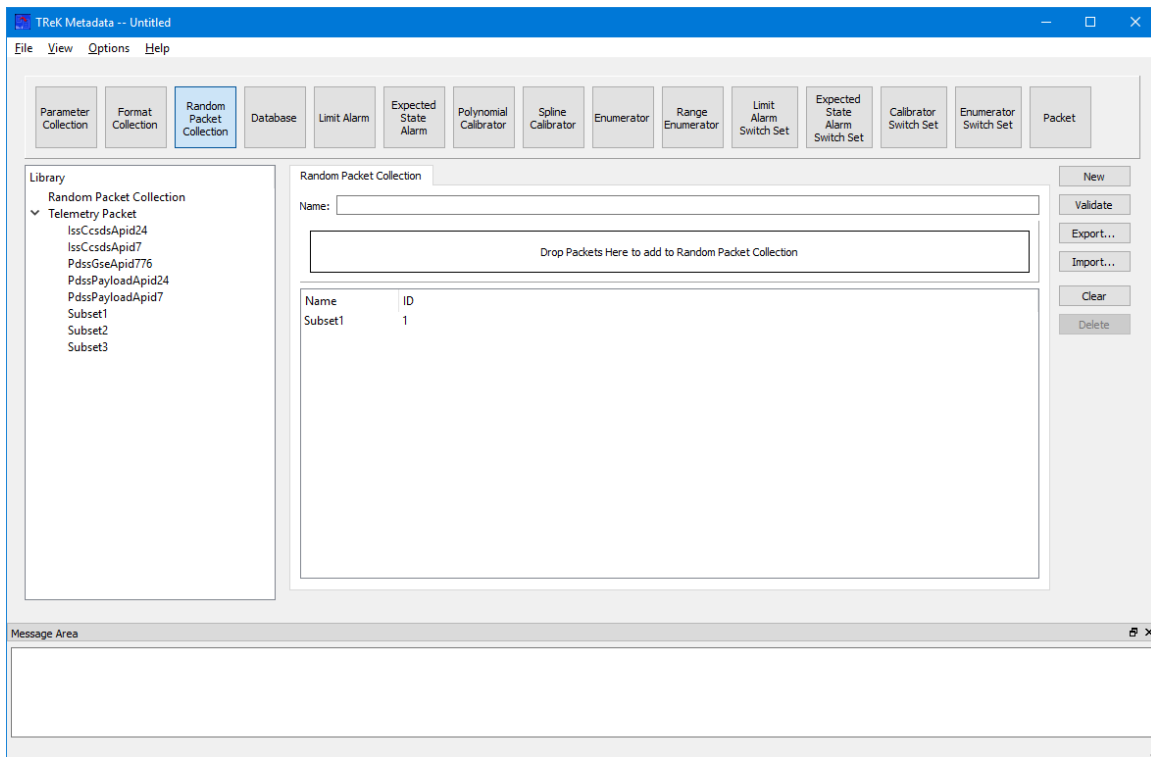
The name field is used to enter the name of the Random Packet Collection.

### Packet Drop Zone

The Packet Drop Zone is used to add packets to the Random Packet Collection.

The Metadata application uses Drag and Drop to move items from the Library Area into the Work Area.

To add a packet to the Random Packet Collection, use your left mouse button to select a packet from the Library Telemetry Packet list, and while holding the left mouse button down, drag the item to the Packet Drop Zone and drop it. The packet will be added to the Random Packet Collection as shown in Figure 10.



**Figure 10 Random Packet Collection with Packet**

Random Packet Collections require that all packets within it are of the same type. The first packet placed in the Random Packet Collection sets the type for the packet. If you attempt to place a packet with a different type in the Random Packet Collection, it will be rejected with a friendly message.

The following functions are available when working with a Random Packet Collection:

New

New provides the capability to clear the existing Random Packet Collection information.

Validate

Validate provides the capability to validate the Random Packet Collection information.

Export

Export provides the capability to save the Random Packet Collection to a file.

Import

Import provides the capability to load a Random Packet Collection from a file. When a Random Packet Collection is imported the collection information is displayed on the Random Packet Collection tab. To store any modifications back to the file, the Random Packet Collection must be exported.

Clear

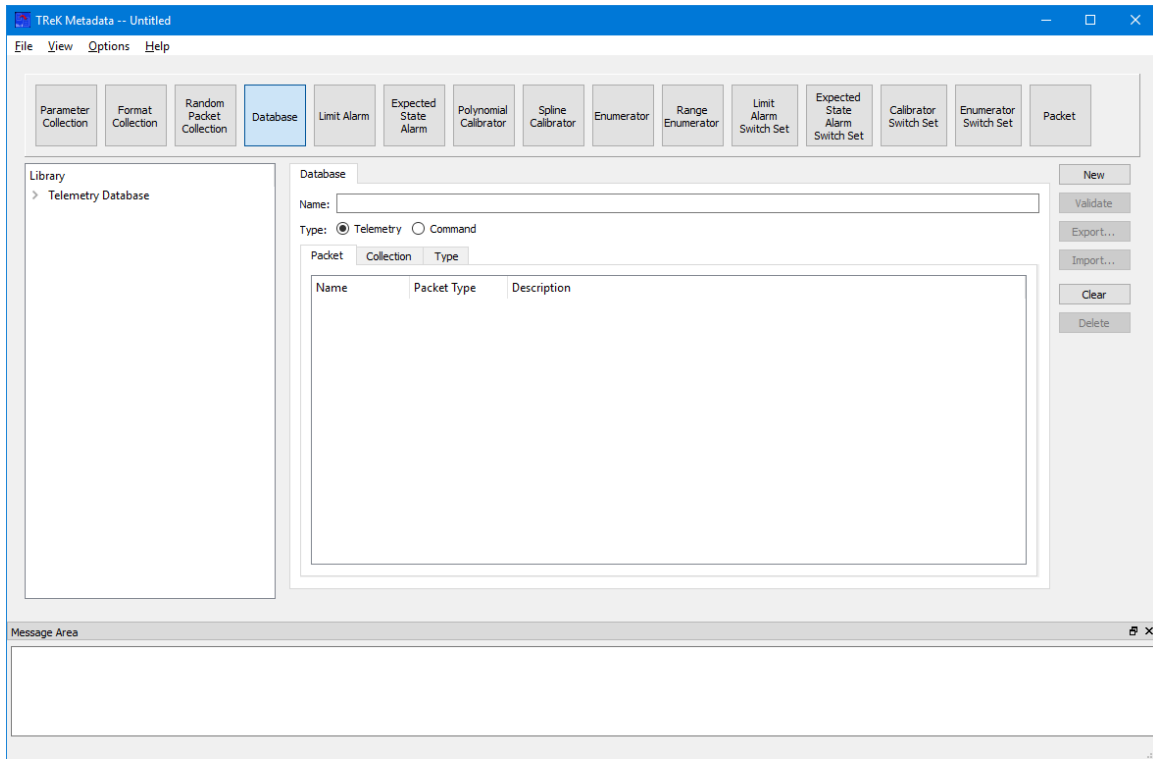
Clear provides the capability to clear the Work Area.

Delete

Delete provides the capability to delete a selected packet in the Random Packet Collection.

## **6.4 Database**

The Database configuration provides the capability to work with a TReK Database. Figure 11 shows the Main Window in the Database configuration. The main capabilities provided include creating a new database, viewing information about packets, collections, and types in the database, adding a packet to the database, deleting a packet from the database, and validating a database. To work with database tables directly, a SQLite tool can be used to open and edit the database contents. There are many free and shareware tools available.



**Figure 11 Database Configuration**

On the left hand side of the Main Window you will see the Library Area. It is configured to show a list of Telemetry Databases or Command Databases that reside in the `trek_workspace`. When you create a database and export it to the `trek_workspace`, it will automatically be added to the applicable database list. The Library Area only displays items stored in the `trek_workspace`. If you need to work on an item outside of the `trek_workspace`, you will need to import the item. In the middle of the Main Window you will see the Work Area showing the Database Tab. This is where you will see information stored in the Database. On the right hand side of the Main Window you will see a set of buttons that provide various capabilities applicable to the Database you are working with (e.g., Validate to validate the Database or Export to export a packet from the database).

The Work Area provides the following information:

#### Name

The name field is used to display the name of the Database. The name field cannot be directly edited by typing in the field. The name field is populated when a new database is created using the New button or drag and drop is used to populate the field.

#### Type

The type selection is used to identify the type of Database: Telemetry or Command.



### Packet Tab

The Packet Tab shows the packets in a Telemetry Database and the Commands in a Command Database.

### Collection Tab

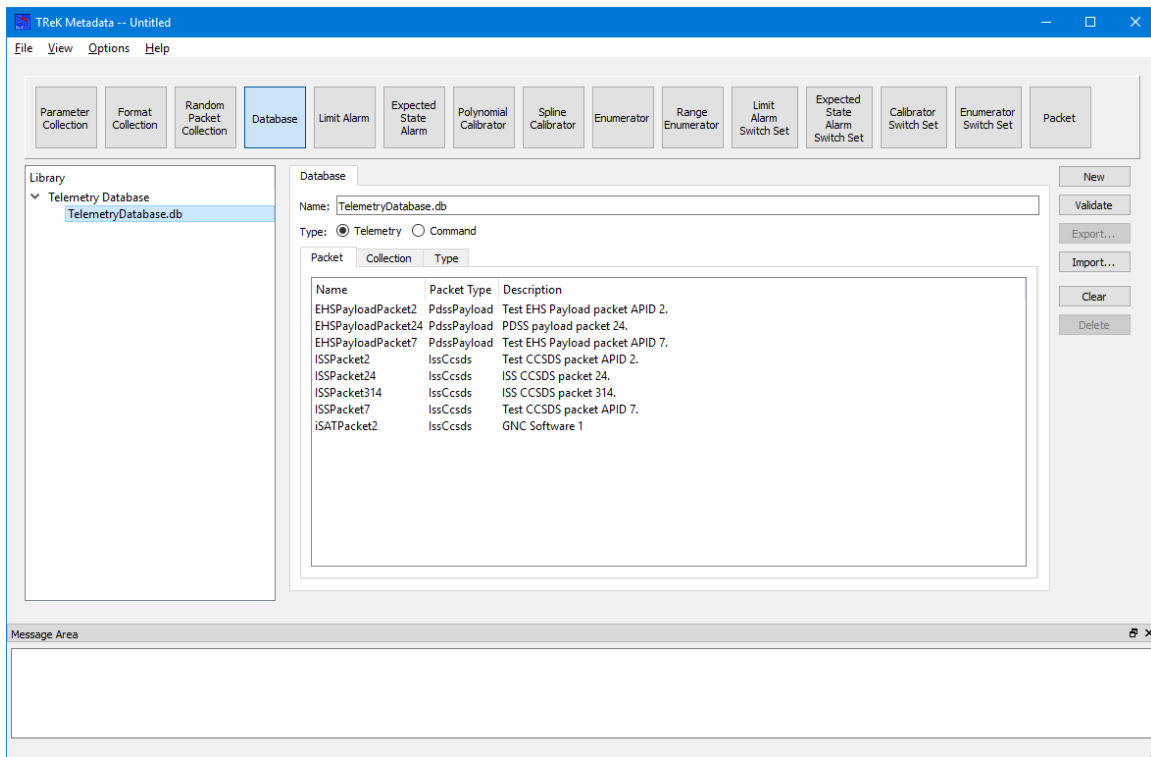
The Collection Tab shows the collections in a Telemetry Database and the collections in a Command Database.

### Types Tab

The Types Tab shows the types in a Telemetry Database and the types in a Command Database.

The Metadata application uses Drag and Drop to move items from the Library Area into the Work Area.

To open a database, use your left mouse button to select a database from the Library, and while holding the left mouse button down, drag the item to the Name field and drop it. The database will be opened and the list of packets in the database will be displayed in the list as shown in Figure 12.



**Figure 12 Database Packets Shown In List**

The following functions are available when working with a Database:

New

New provides the capability to create a new database.

Validate

Validate provides the capability to validate a database.

Export

Export provides the capability to export a selected packet to a file.

Import

Import provides the capability to import information into a database. For a telemetry database, this includes the following types of imports: a packet definition defined in an ASCII file format as described in the TReK Telemetry Database Definition Document, a collection definition defined in an ASCII file format as described in the TReK Telemetry Database Definition Document, a type definition defined in an ASCII file format as described in the TReK Telemetry Database Definition Document, and a HOSC Ground Support Equipment (GSE) packet definition as described in the Payload to Generic User Interface Definition Document (PGUIDD).

Important Note about Parameter Names after Importing a GSE Packet Definition

When a GSE packet definition is imported the parameter names are changed. In order to keep parameter names unique, characters representing type of processing are added to the name. For example, suppose the name of the parameter is UGZG20RT2004J. If the parameter is unprocessed, the parameter will be named UGZG20RT2004J=UN where =UN was added to indicate that it is an unprocessed parameter. A converted value will have =CO added to the name, and a calibrated value will have =CA added to the name. Additional characters are also added to indicate Overall Status (=OStatus), Number of Samples (=Samples), and Sample Status Values (=Status). The following shows an example for a GSE parameter named UGZG20RT2004J:

UGZG20RT2004J	Original Parameter name in GSE Packet Definition
UGZG20RT2004J=UN	Unprocessed Value Name
UGZG20RT2004J=UNOStatus	Unprocessed Overall Status Name
UGZG20RT2004J=UNSamples	Unprocessed Number of Samples Name
UGZG20RT2004J= UNStatus	Unprocessed Sample Status Values Name

For a command database, this includes the following types of imports: a packet definition defined in an ASCII file format as described in the TReK Command Database Definition Document, a collection definition defined in an ASCII file format as described in the TReK Command Database Definition Document, and a type definition defined in an ASCII file format as described in the TReK Command Database Definition Document

Clear

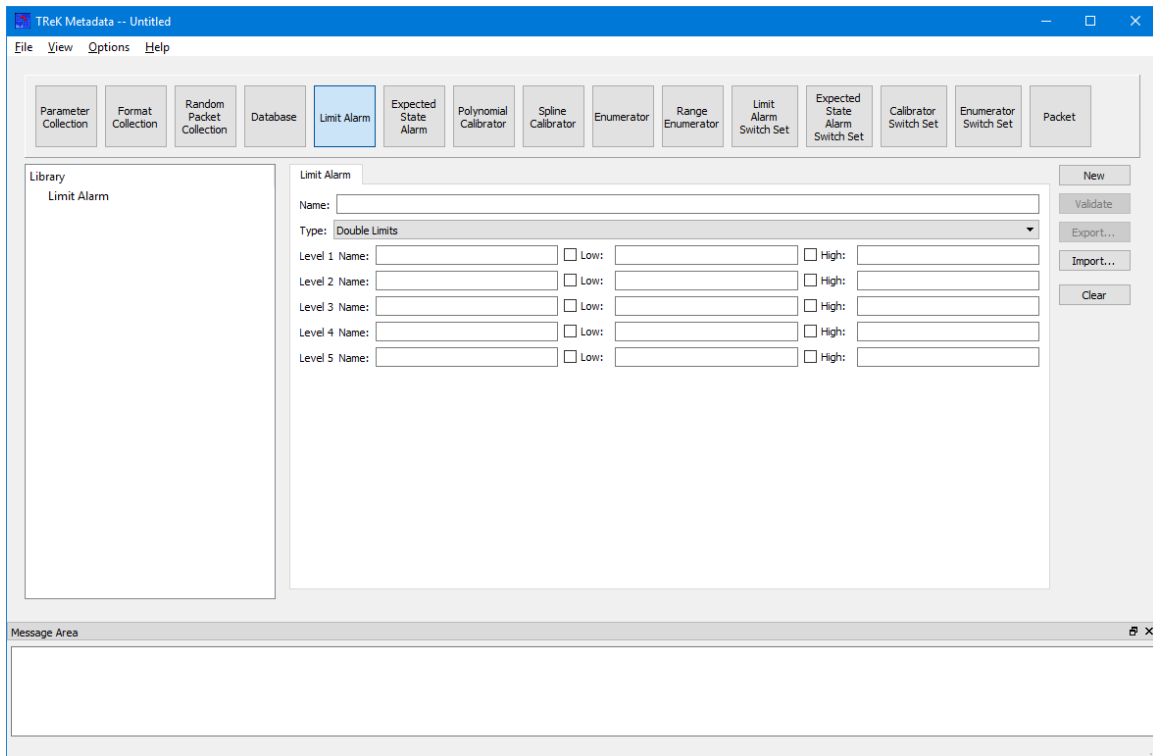
Clear provides the capability to clear the Work Area.

## Delete

Delete provides the capability to delete a selected packet from the database.

## 6.5 Limit Alarm

The Limit Alarm configuration provides the capability to work with a Limit Alarm. Figure 13 shows the Main Window in the Limit Alarm configuration.



**Figure 13 Limit Alarm Configuration**

On the left hand side of the Main Window you will see the Library Area. It is configured to provide access to existing Limit Alarms in the `trek_workspace`. When you create a Limit Alarm and export it to the `trek_workspace`, it will be added to the Limit Alarm list. The Library Area only displays items stored in the `trek_workspace`. If you need to work on an item outside of the `trek_workspace`, you will need to import the item. In the middle of the Main Window you will see the Work Area showing the Limit Alarm Tab. This is where you will define the details of the Limit Alarm. On the right hand side of the Main Window you will see a set of buttons that provide various capabilities applicable to the Limit Alarm you are working on (e.g., Validate to validate the Limit Alarm or Export to export the Limit Alarm).

The Work Area provides the following information:

Name

The name field is used to display the name of the Limit Alarm.

Type

The type menu is used to select the type of Limit Alarm.

Limit Alarm Levels

Fields are provided to set details for each Limit Alarm Level as shown in Figure 14. The Low checkbox is used to indicate if the Low for that level is in use. The High checkbox is used to indicate if the High for that level is in use.

Level 1 Name:   Low:   High:

**Figure 14 Limit Alarm Level**

The following functions are available when working with a Limit Alarm:

New

New provides the capability to clear the existing Limit Alarm information.

Validate

Validate provides the capability to validate the Limit Alarm information.

Export

Export provides the capability to save the Limit Alarm to a file.

Import

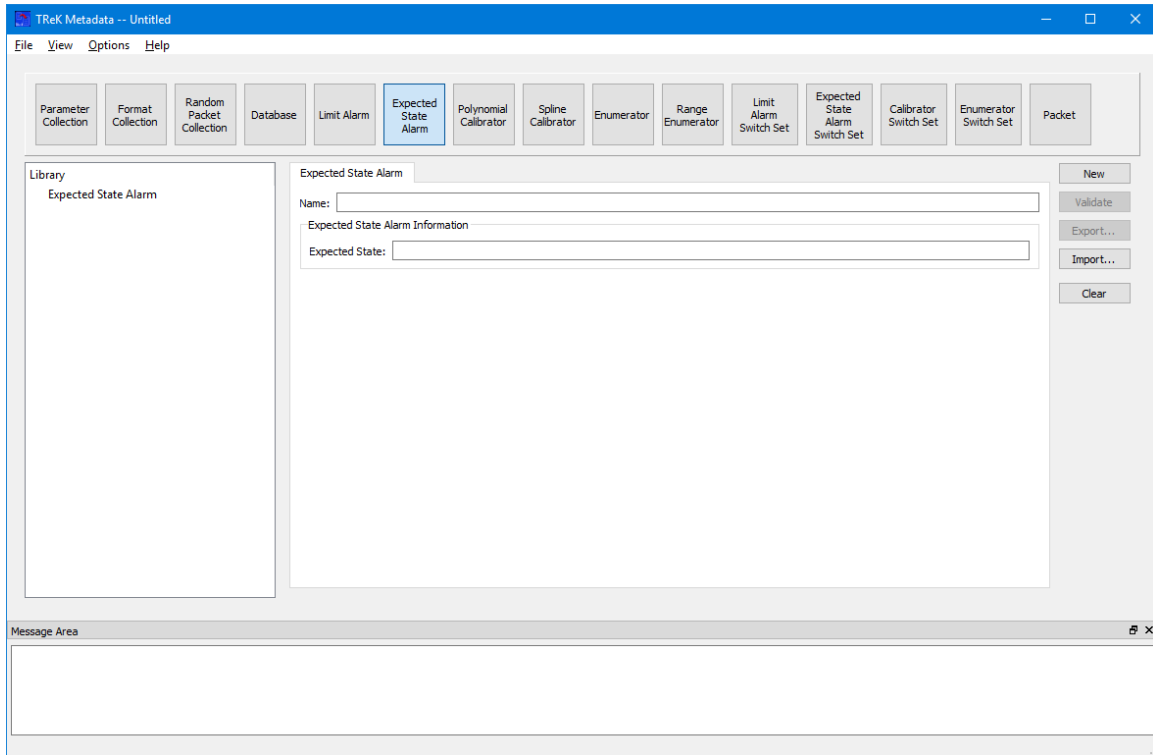
Import provides the capability to load a Limit Alarm from a file. When a Limit Alarm is imported the information is displayed on the Limit Alarm tab. To store any modifications back to the file, the Limit Alarm must be exported.

Clear

Clear provides the capability to clear the Work Area.

## 6.6 Expected State Alarm

The Expected State Alarm configuration provides the capability to work with an Expected State Alarm. Figure 15 shows the Main Window in the Expected State Alarm configuration.



**Figure 15 Expected State Alarm Configuration**

On the left hand side of the Main Window you will see the Library Area. It is configured to provide access to existing Expected State Alarms in the `trek_workspace`. When you create an Expected State Alarm and export it to the `trek_workspace`, it will be added to the Expected State Alarm list. The Library Area only displays items stored in the `trek_workspace`. If you need to work on an item outside of the `trek_workspace`, you will need to import the item. In the middle of the Main Window you will see the Work Area showing the Expected State Alarm Tab. This is where you will define the details of the Expected State Alarm. On the right hand side of the Main Window you will see a set of buttons that provide various capabilities applicable to the Expected State Alarm you are working on (e.g., Validate to validate the Expected State Alarm or Export to export the Expected State Alarm).

The Work Area provides the following information:

#### Name

The name field is used to display the name of the Expected State Alarm.

#### Expected State

The expected state field is used to enter the expected state for the Expected State Alarm.

The following functions are available when working with an Expected State Alarm:

### New

New provides the capability to clear the existing Expected State Alarm information.

### Validate

Validate provides the capability to validate the Expected State Alarm information.

### Export

Export provides the capability to save the Expected State Alarm to a file.

### Import

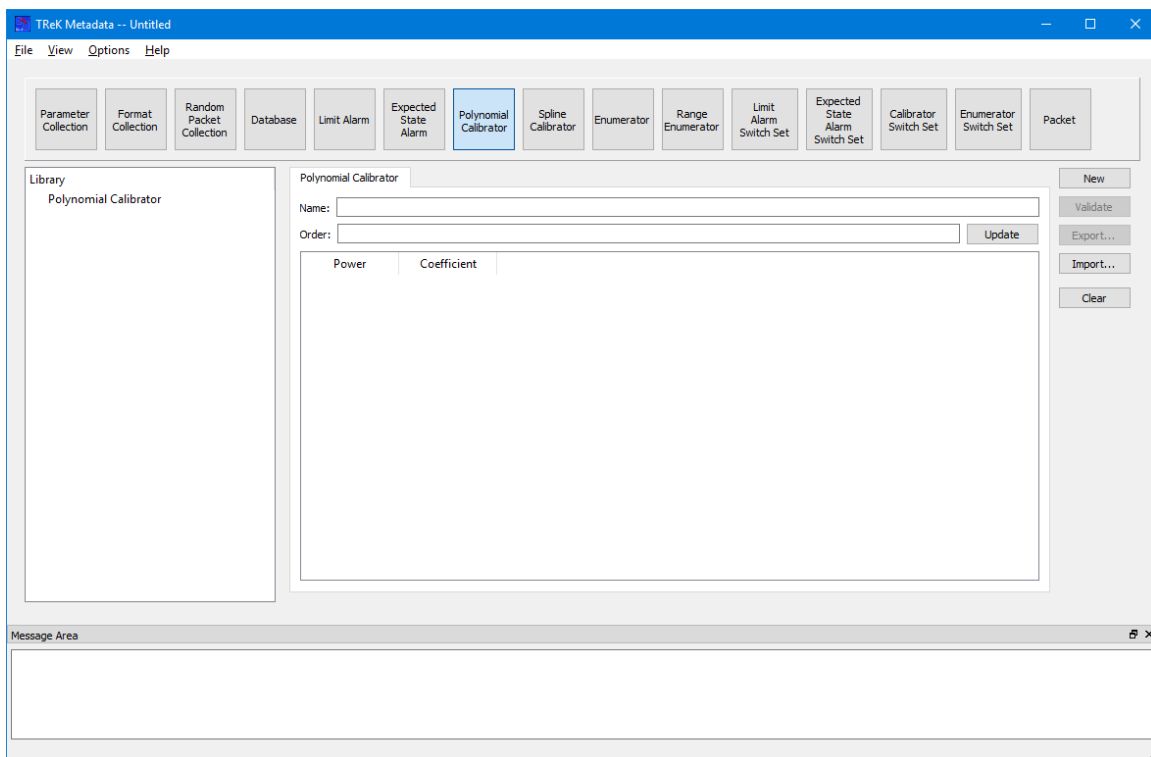
Import provides the capability to load an Expected State Alarm from a file. When an Expected State Alarm is imported the information is displayed on the Expected State Alarm tab. To store any modifications back to the file, the Expected State Alarm must be exported.

### Clear

Clear provides the capability to clear the Work Area.

## 6.7 Polynomial Calibrator

The Polynomial Calibrator configuration provides the capability to work with a Polynomial Calibrator. Figure 16 shows the Main Window in the Polynomial Calibrator configuration.



**Figure 16 Polynomial Calibrator Configuration**

On the left hand side of the Main Window you will see the Library Area. It is configured to provide access to existing Polynomial Calibrators in the `trek_workspace`. When you create a Polynomial Calibrator and export it to the `trek_workspace`, it will be added to the Polynomial Calibrator list. The Library Area only displays items stored in the `trek_workspace`. If you need to work on an item outside of the `trek_workspace`, you will need to import the item. In the middle of the Main Window you will see the Work Area showing the Polynomial Calibrator Tab. This is where you will define the details of the Polynomial Calibrator. On the right hand side of the Main Window you will see a set of buttons that provide various capabilities applicable to the Polynomial Calibrator you are working on (e.g., Validate to validate the Polynomial Calibrator or Export to export the Polynomial Calibrator).

The Work Area provides the following information:

#### Name

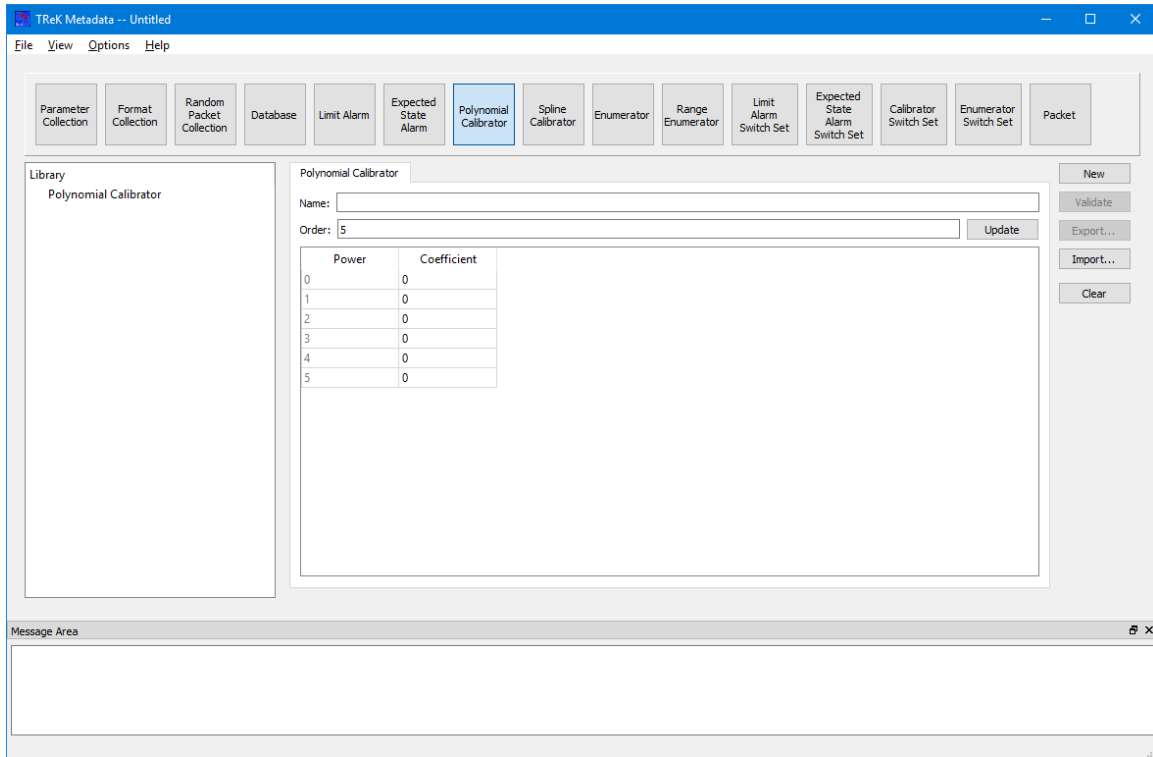
The name field is used to display the name of the Polynomial Calibrator.

#### Order

The order field is used to set the order of the Polynomial Calibrator. The correct number of rows is added to the Power/Coefficient List when the Update button is pushed.

#### Power Coefficient List

The Power Coefficient List is used to enter the Power and Coefficient information. The Power Coefficient List is configured when you enter a value for the Order and push the Update button. The results are shown in Figure 17.



**Figure 17 Power Coefficient List Populate when Order is Set to 5**

The following functions are available when working with a Polynomial Calibrator:

#### New

New provides the capability to clear the existing Polynomial Calibrator information.

#### Validate

Validate provides the capability to validate the Polynomial Calibrator information.

#### Export

Export provides the capability to save the Polynomial Calibrator to a file.

#### Import

Import provides the capability to load a Polynomial Calibrator from a file. When a Polynomial Calibrator is imported the information is displayed on the Polynomial Calibrator tab. To store any modifications back to the file, the Polynomial Calibrator must be exported.

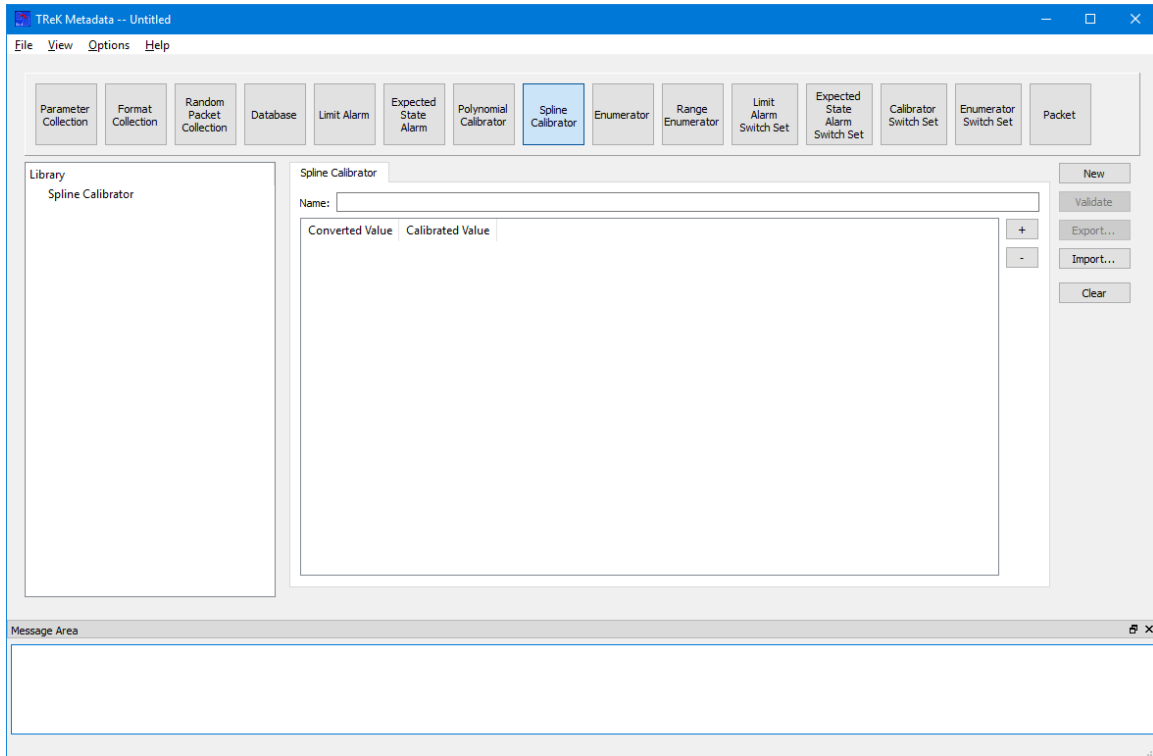
#### Clear

Clear provides the capability to clear the Work Area.



## 6.8 Spline Calibrator

The Spline Calibrator configuration provides the capability to work with a Spline Calibrator. Figure 18 shows the Main Window in the Spline Calibrator configuration.



**Figure 18 Spline Calibrator Configuration**

On the left hand side of the Main Window you will see the Library Area. It is configured to provide access to existing Spline Calibrators in the `trek_workspace`. When you create a Spline Calibrator and export it to the `trek_workspace`, it will be added to the Spline Calibrator list. The Library Area only displays items stored in the `trek_workspace`. If you need to work on an item outside of the `trek_workspace`, you will need to import the item. In the middle of the Main Window you will see the Work Area showing the Spline Calibrator Tab. This is where you will define the details of the Spline Calibrator. On the right hand side of the Main Window you will see a set of buttons that provide various capabilities applicable to the Spline Calibrator you are working on (e.g., Validate to validate the Spline Calibrator or Export to export the Spline Calibrator).

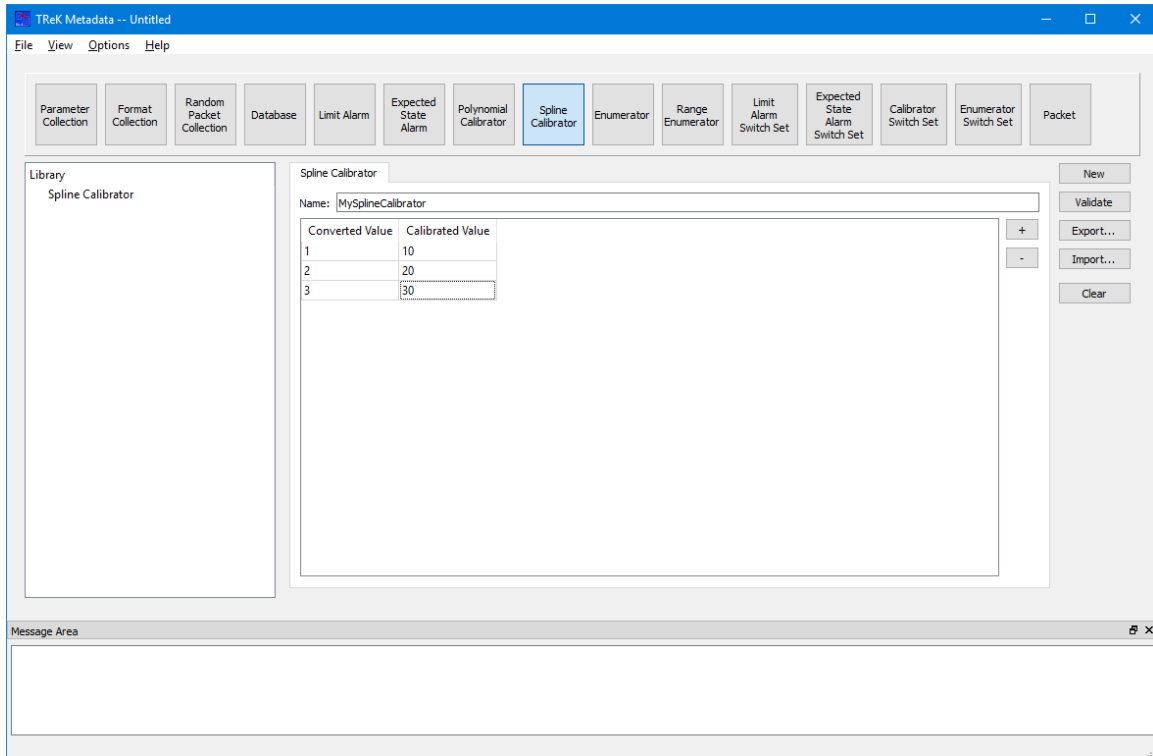
The Work Area provides the following information:

### Name

The name field is used to display the name of the Spline Calibrator.

### Converted Value Calibrated Value List

The Converted Value Calibrated Value List is used to enter the Converted Value and Calibrated Value information. The + (plus) button is used to add a row to the list and the – (minus) button is used to delete a row from the list. Converted Value and Calibrated Value information can be entered directly into the list as shown in Figure 19.



**Figure 19 Spline Calibrator Information**

The following functions are available when working with a Spline Calibrator:

#### New

New provides the capability to clear the existing Spline Calibrator information.

#### Validate

Validate provides the capability to validate the Spline Calibrator information.

#### Export

Export provides the capability to save the Spline Calibrator to a file.

#### Import

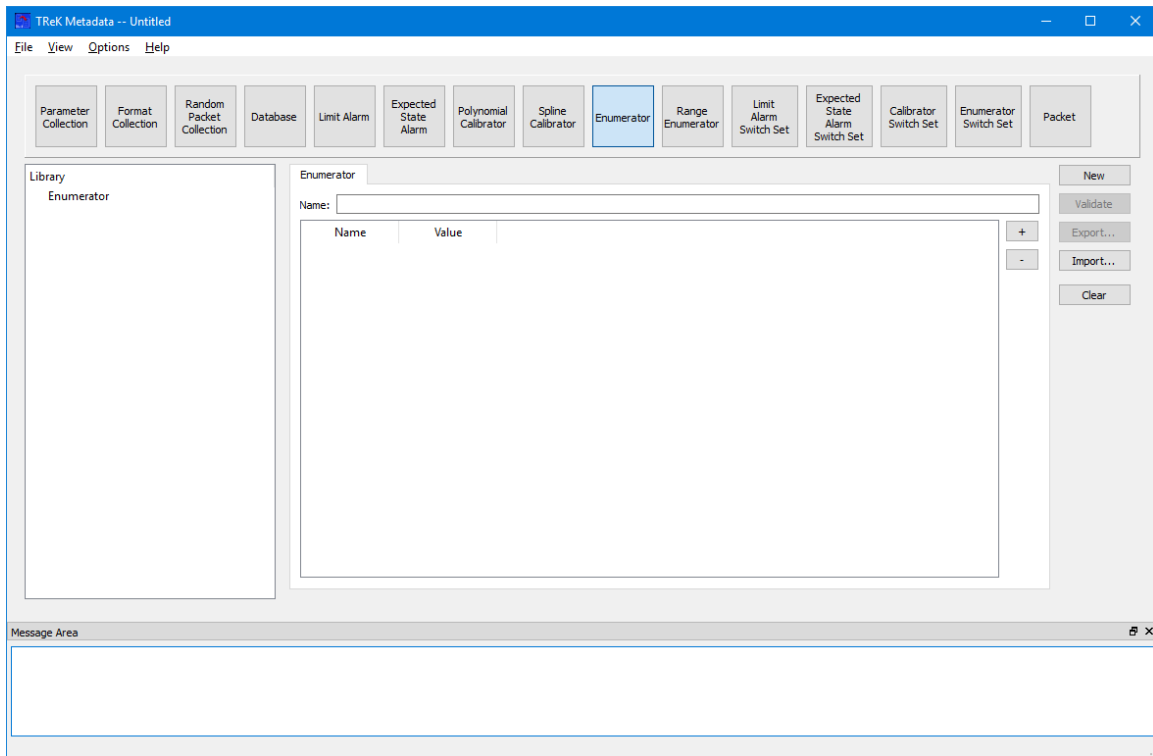
Import provides the capability to load a Spline Calibrator from a file. When a Spline Calibrator is imported the information is displayed on the Spline Calibrator tab. To store any modifications back to the file, the Spline Calibrator must be exported.

## Clear

Clear provides the capability to clear the Work Area.

## 6.9 Enumerator

The Enumerator configuration provides the capability to work with an Enumerator. Figure 20 shows the Main Window in the Enumerator configuration.



**Figure 20 Enumerator Configuration**

On the left hand side of the Main Window you will see the Library Area. It is configured to provide access to existing Enumerators in the `trek_workspace`. When you create an Enumerator and export it to the `trek_workspace`, it will be added to the Enumerator list. The Library Area only displays items stored in the `trek_workspace`. If you need to work on an item outside of the `trek_workspace`, you will need to import the item. In the middle of the Main Window you will see the Work Area showing the Enumerator Tab. This is where you will define the details of the Enumerator. On the right hand side of the Main Window you will see a set of buttons that provide various capabilities applicable to the Enumerator you are working on (e.g., Validate to validate the Enumerator or Export to export the Enumerator).

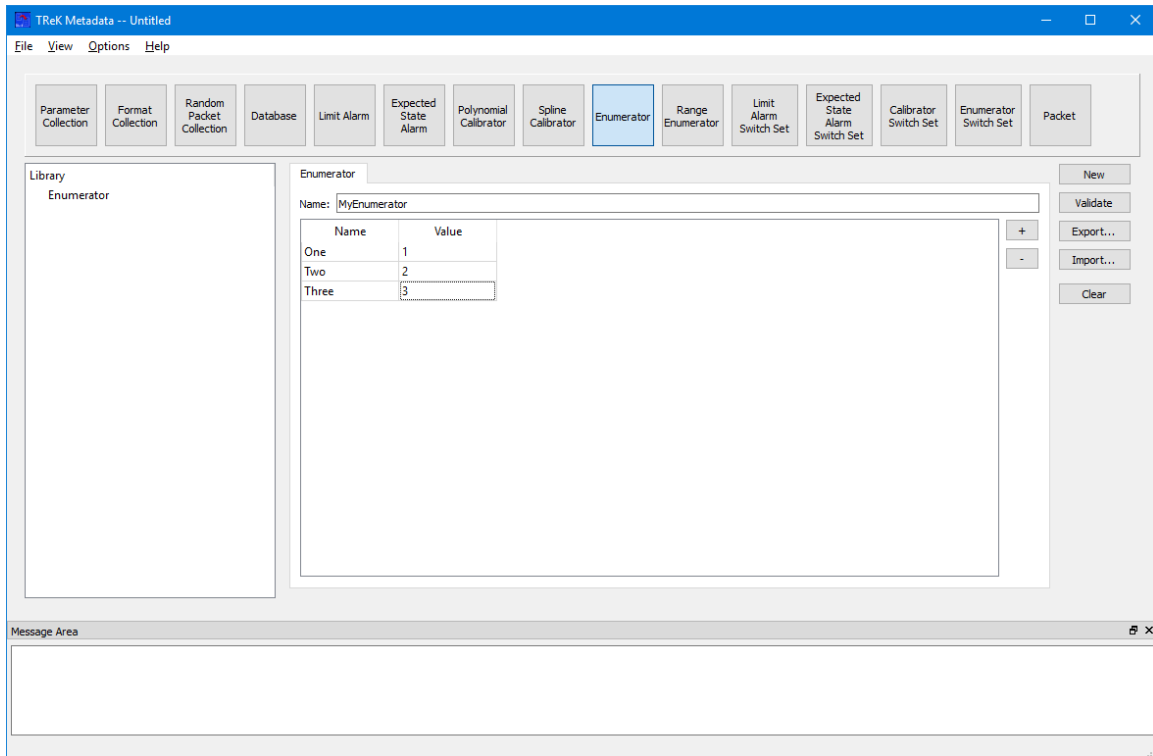
The Work Area provides the following information:

Name

The name field is used to display the name of the Enumerator.

Name Value List

The Name Value List is used to enter the Name and Value information for the Enumerator. The + (plus) button is used to add a row to the list and the – (minus) button is used to delete a row from the list. Name and Value information can be entered directly into the list as shown in Figure 21.



**Figure 21 Populated Enumerator**

The following functions are available when working with an Enumerator:

New

New provides the capability to clear the existing Enumerator information.

Validate

Validate provides the capability to validate the Enumerator information.

Export

Export provides the capability to save the Enumerator to a file.

### Import

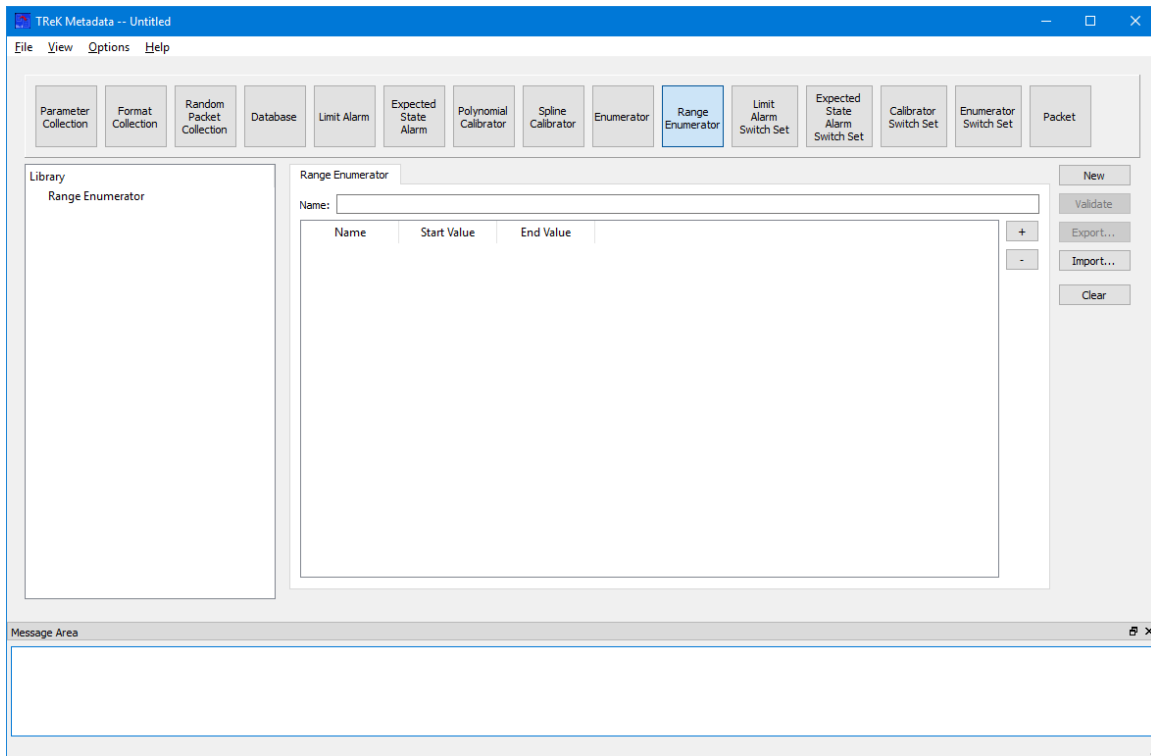
Import provides the capability to load an Enumerator from a file. When an Enumerator is imported the information is displayed on the Enumerator tab. To store any modifications back to the file, the Enumerator must be exported.

### Clear

Clear provides the capability to clear the Work Area.

## 6.10 Range Enumerator

The Range Enumerator configuration provides the capability to work with a Range Enumerator. Figure 22 shows the Main Window in the Range Enumerator configuration.



**Figure 22 Range Enumerator Configuration**

On the left hand side of the Main Window you will see the Library Area. It is configured to provide access to existing Range Enumerators in the `trek_workspace`. When you create a Range Enumerator and export it to the `trek_workspace`, it will be added to the Range Enumerator list. The Library Area only displays items stored in the `trek_workspace`. If you need to work on an item outside of the `trek_workspace`, you will need to import the item. In the middle of the Main Window you will see the Work Area showing the Range Enumerator Tab. This is where you will define the details of the Range Enumerator. On the right hand side of the Main Window you will see a set of

buttons that provide various capabilities applicable to the Range Enumerator you are working on (e.g., Validate to validate the Range Enumerator or Export to export the Range Enumerator).

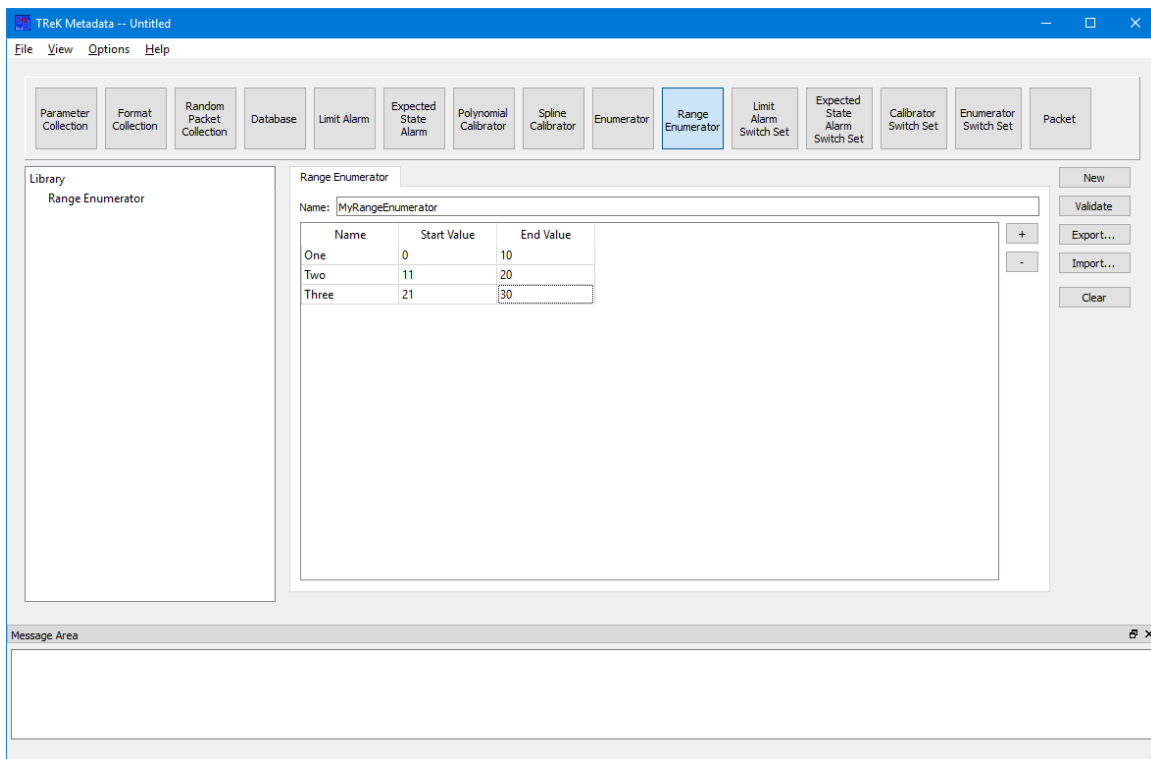
The Work Area provides the following information:

### Name

The name field is used to display the name of the Enumerator.

### Name Start Value End Value List

The Name Start Value End Value List is used to enter the Name, Start Value, and End Value information for the Range Enumerator. The + (plus) button is used to add a row to the list and the – (minus) button is used to delete a row from the list. Name, Start Value, and End Value information can be entered directly into the list as shown in Figure 23.



**Figure 23 Populated Range Enumerator**

The following functions are available when working with a Range Enumerator:

### New

New provides the capability to clear the existing Range Enumerator information.

### Validate

Validate provides the capability to validate the Range Enumerator information.

### Export

Export provides the capability to save the Range Enumerator to a file.

### Import

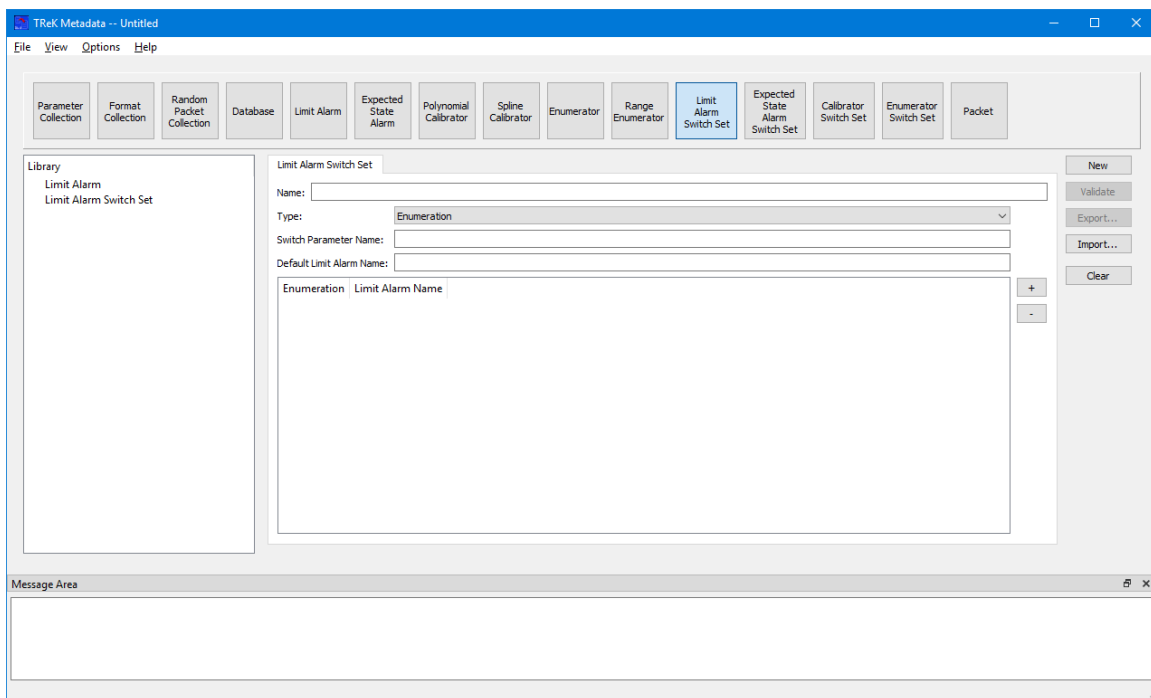
Import provides the capability to load a Range Enumerator from a file. When a Range Enumerator is imported the information is displayed on the Range Enumerator tab. To store any modifications back to the file, the Range Enumerator must be exported.

### Clear

Clear provides the capability to clear the Work Area.

## 6.11 Limit Alarm Switch Set

The Limit Alarm Switch Set configuration provides the capability to work with a Limit Alarm Switch Set. Figure 24 shows the Main Window in the Limit Alarm Switch Set configuration.



**Figure 24 Limit Alarm Switch Set Configuration**

On the left hand side of the Main Window you will see the Library Area. It is configured to provide access to existing Limit Alarms and Limit Alarm Switch Sets in the trek\_workspace. When you create a Limit Alarm Switch Set and export it to the trek\_workspace, it will be added to the Limit Alarm Switch Set list. The Library Area only displays items stored in the trek\_workspace. If you need to work on an item outside

of the `trek_workspace`, you will need to import the item. In the middle of the Main Window you will see the Work Area showing the Limit Alarm Switch Set Tab. This is where you will define the details of the Limit Alarm Switch Set. On the right hand side of the Main Window you will see a set of buttons that provide various capabilities applicable to the Limit Alarm Switch Set you are working on (e.g., Validate to validate the Limit Alarm Switch Set or Export to export the Limit Alarm Switch Set).

The Work Area provides the following information:

### Name

The name field is used to display the name of the Limit Alarm Switch Set.

### Type

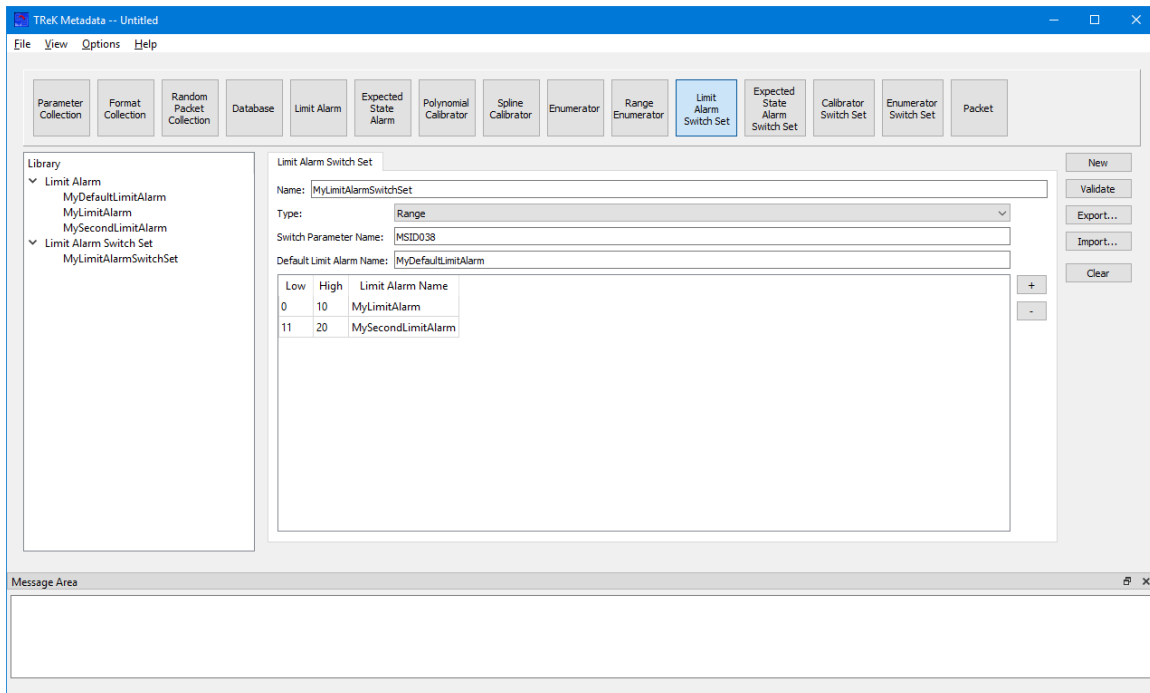
The type menu is used to specify the type of Limit Alarm Switch Set.

### Default Limit Alarm Name

The default limit alarm name field is used to display the name of the default limit alarm. This must be the name of a limit alarm that exists in the `trek_workspace`.

### Set List

The Set List is used to enter set information for the Limit Alarm Switch Set. The + (plus) button is used to add a row to the list and the – (minus) button is used to delete a row from the list. Set information can be entered directly into the list as shown in Figure 25. The Set List area will be configured based on switch type.



**Figure 25 Populated Limit Alarm Switch Set**



The following functions are available when working with a Limit Alarm Switch Set:

New

New provides the capability to clear the existing Limit Alarm Switch Set information.

Validate

Validate provides the capability to validate the Limit Alarm Switch Set information.

Export

Export provides the capability to save the Limit Alarm Switch Set to a file.

Import

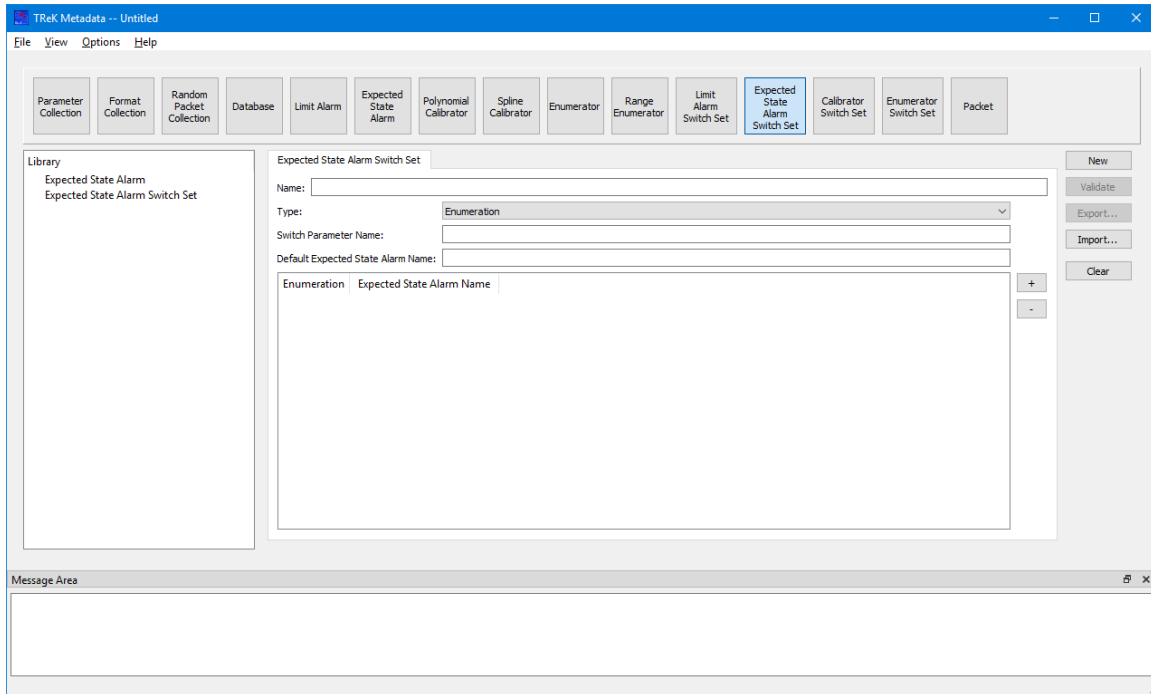
Import provides the capability to load a Limit Alarm Switch Set from a file. When a Limit Alarm Switch Set is imported the information is displayed on the Limit Alarm Switch Set tab. To store any modifications back to the file, the Limit Alarm Switch Set must be exported.

Clear

Clear provides the capability to clear the Work Area.

## **6.12 Expected State Alarm Switch Set**

The Expected State Alarm Switch Set configuration provides the capability to work with an Expected State Switch Set. Figure 26 shows the Main Window in the Expected State Alarm Switch Set configuration.



**Figure 26 Expected State Alarm Switch Set Configuration**

On the left hand side of the Main Window you will see the Library Area. It is configured to provide access to existing Expected State Alarms and Expected State Alarm Switch Sets in the `trek_workspace`. When you create an Expected State Alarm Switch Set and export it to the `trek_workspace`, it will be added to the Expected State Alarm Switch Set list. The Library Area only displays items stored in the `trek_workspace`. If you need to work on an item outside of the `trek_workspace`, you will need to import the item. In the middle of the Main Window you will see the Work Area showing the Expected State Alarm Switch Set Tab. This is where you will define the details of the Expected State Alarm Switch Set. On the right hand side of the Main Window you will see a set of buttons that provide various capabilities applicable to the Expected State Alarm Switch Set you are working on (e.g., Validate to validate the Expected State Alarm Switch Set or Export to export the Expected State Alarm Switch Set).

The Work Area provides the following information:

#### Name

The name field is used to display the name of the Expected State Alarm Switch Set.

#### Type

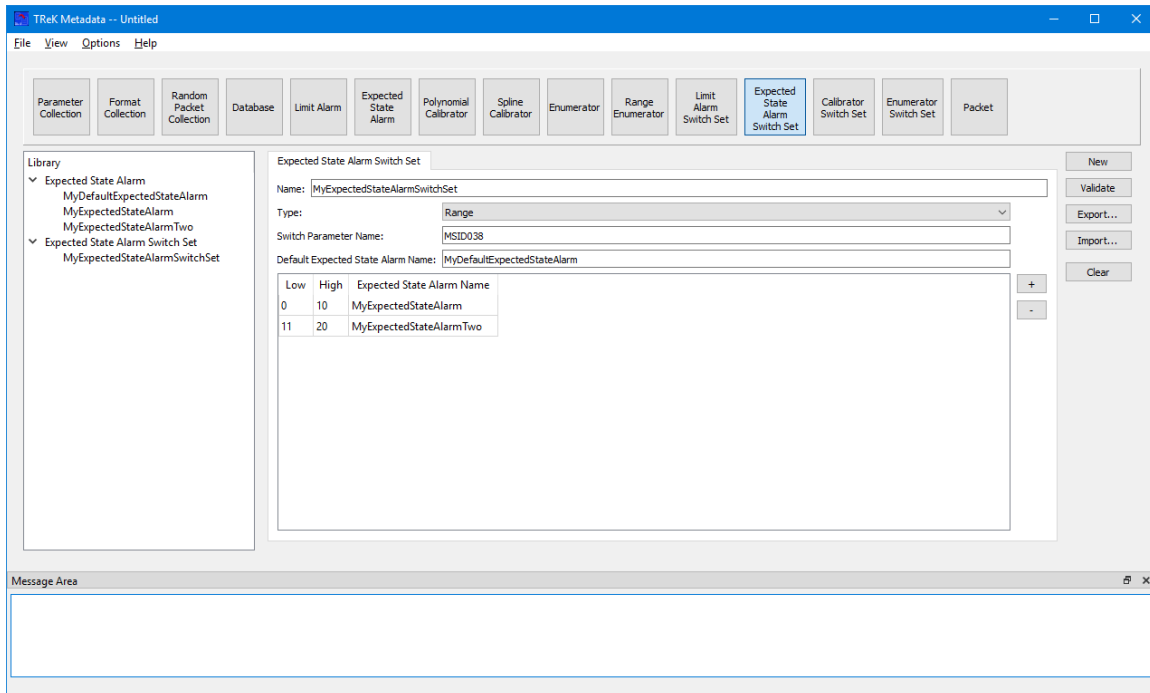
The type menu is used to specify the type of Expected State Alarm Switch Set.

### Default Expected State Alarm Name

The default expected state alarm name field is used to display the name of the default expected state alarm. This must be the name of an expected state alarm that exists in the `trek_workspace`.

### Set List

The Set List is used to enter set information for the Expected State Alarm Switch Set. The + (plus) button is used to add a row to the list and the – (minus) button is used to delete a row from the list. Set information can be entered directly into the list as shown in Figure 27. The Set List area will be configured based on switch type.



**Figure 27 Populated Expected State Alarm Switch Set**

The following functions are available when working with an Expected State Alarm Switch Set:

#### New

New provides the capability to clear the existing Expected State Alarm Switch Set information.

#### Validate

Validate provides the capability to validate the Expected State Alarm Switch Set information.

#### Export

Export provides the capability to save the Expected State Alarm Switch Set to a file.

### Import

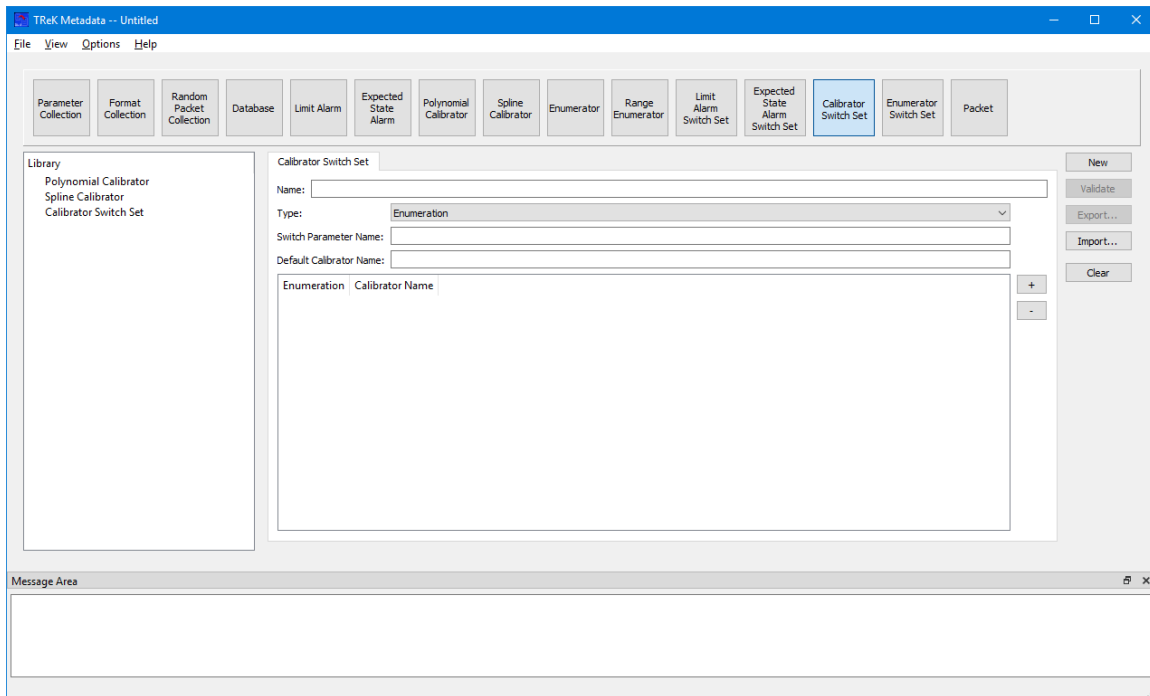
Import provides the capability to load an Expected State Alarm Switch Set from a file. When an Expected State Alarm Switch Set is imported the information is displayed on the Expected State Alarm Switch Set tab. To store any modifications back to the file, the Expected State Alarm Switch Set must be exported.

### Clear

Clear provides the capability to clear the Work Area.

## 6.13 Calibrator Switch Set

The Calibrator Switch Set configuration provides the capability to work with a Calibrator Switch Set. Figure 28 shows the Main Window in the Calibrator Switch Set configuration.



**Figure 28 Calibrator Switch Set Configuration**

On the left hand side of the Main Window you will see the Library Area. It is configured to provide access to existing Calibrators and Calibrator Switch Sets in the `trek_workspace`. When you create a Calibrator Switch Set and export it to the `trek_workspace`, it will be added to the Calibrator Switch Set list. The Library Area only displays items stored in the `trek_workspace`. If you need to work on an item outside of the `trek_workspace`, you will need to import the item. In the middle of the Main Window you will see the Work Area showing the Calibrator Switch Set Tab. This is where you will define the details of the Calibrator Switch Set. On the right hand side of the Main Window you will see a set of buttons that provide various capabilities applicable to the

Calibrator Switch Set you are working on (e.g., Validate to validate the Calibrator Switch Set or Export to export the Calibrator Switch Set).

The Work Area provides the following information:

### Name

The name field is used to display the name of the Calibrator Switch Set.

### Type

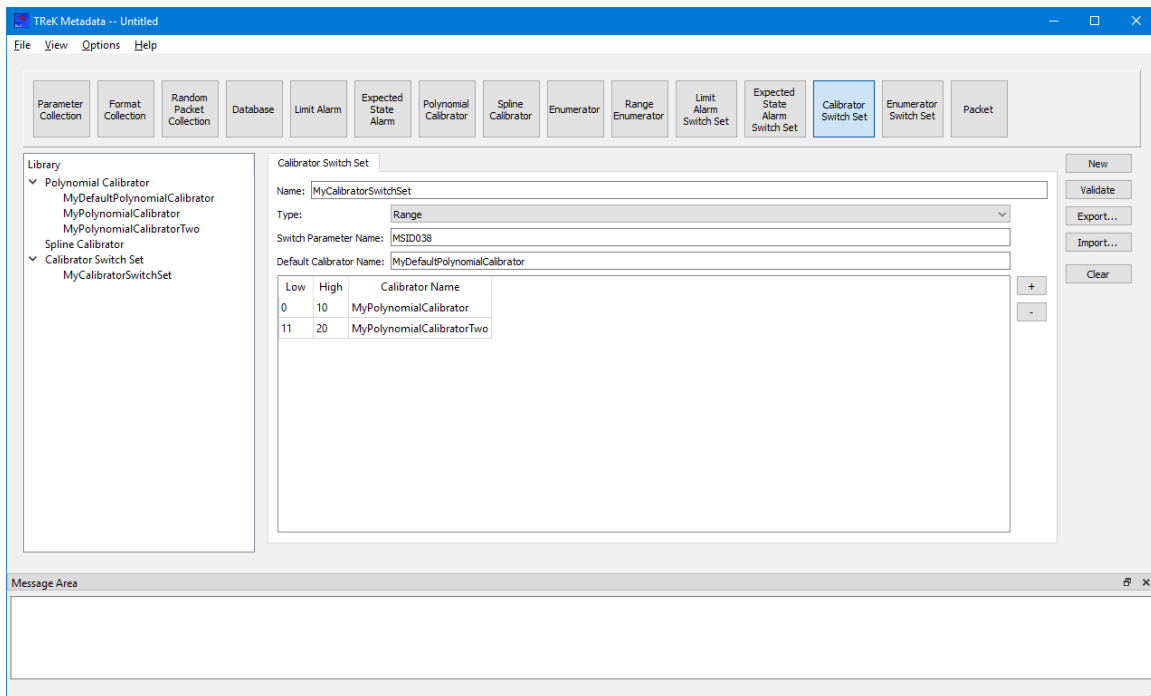
The type menu is used to specify the type of Calibrator Switch Set.

### Default Calibrator Name

The default calibrator name field is used to display the name of the default calibrator. This must be the name of a polynomial calibrator or a spline calibrator that exists in the `trek_workspace`.

### Set List

The Set List is used to enter set information for the Calibrator Switch Set. The + (plus) button is used to add a row to the list and the – (minus) button is used to delete a row from the list. Set information can be entered directly into the list as shown in Figure 29. The Set List area will be configured based on switch type.



**Figure 29 Populated Calibrator Switch Set**

The following functions are available when working with a Calibrator Switch Set:

New

New provides the capability to clear the existing Calibrator Switch Set information.

Validate

Validate provides the capability to validate the Calibrator Switch Set information.

Export

Export provides the capability to save the Calibrator Switch Set to a file.

Import

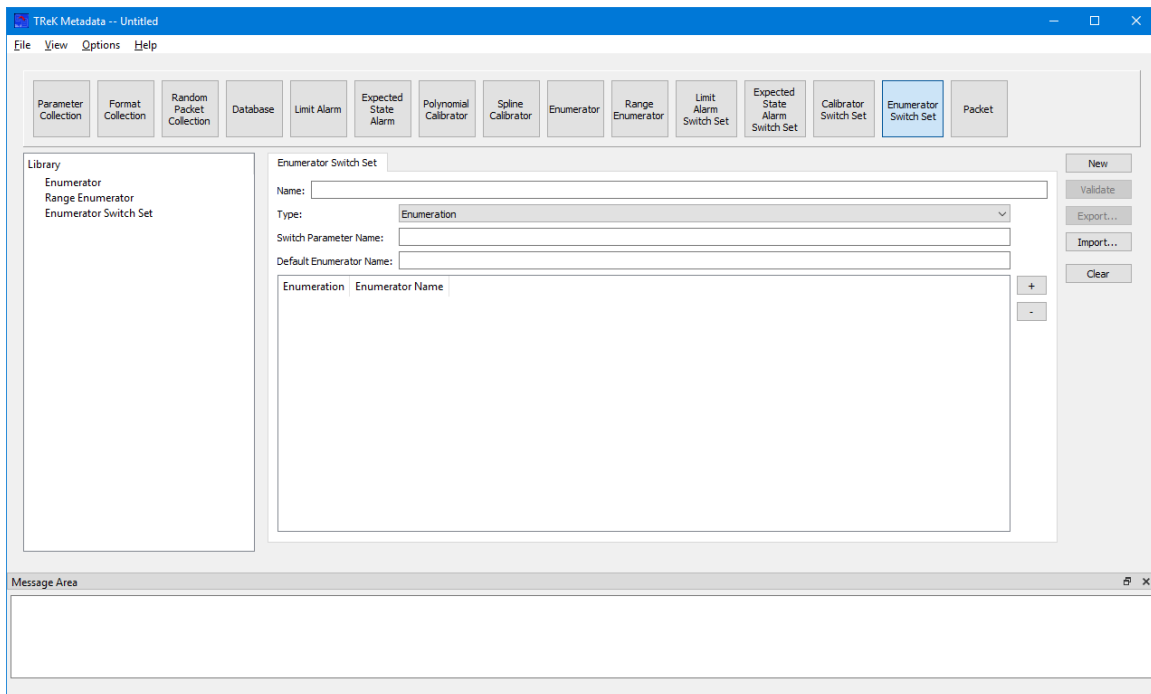
Import provides the capability to load a Calibrator Switch Set from a file. When a Calibrator Switch Set is imported the information is displayed on the Calibrator Switch Set tab. To store any modifications back to the file, the Calibrator Switch Set must be exported.

Clear

Clear provides the capability to clear the Work Area.

## 6.14 Enumerator Switch Set

The Enumerator Switch Set configuration provides the capability to work with an Enumerator Switch Set. Figure 30 shows the Main Window in the Enumerator Switch Set configuration.



**Figure 30 Enumerator Switch Set Configuration**

On the left hand side of the Main Window you will see the Library Area. It is configured to provide access to existing Enumerators and Enumerator Switch Sets in the `trek_workspace`. When you create an Enumerator Switch Set and export it to the `trek_workspace`, it will be added to the Enumerator Switch Set list. The Library Area only displays items stored in the `trek_workspace`. If you need to work on an item outside of the `trek_workspace`, you will need to import the item. In the middle of the Main Window you will see the Work Area showing the Enumerator Switch Set Tab. This is where you will define the details of the Enumerator Switch Set. On the right hand side of the Main Window you will see a set of buttons that provide various capabilities applicable to the Enumerator Switch Set you are working on (e.g., Validate to validate the Enumerator Switch Set or Export to export the Enumerator Switch Set).

The Work Area provides the following information:

Name

The name field is used to display the name of the Enumerator Switch Set.

Type

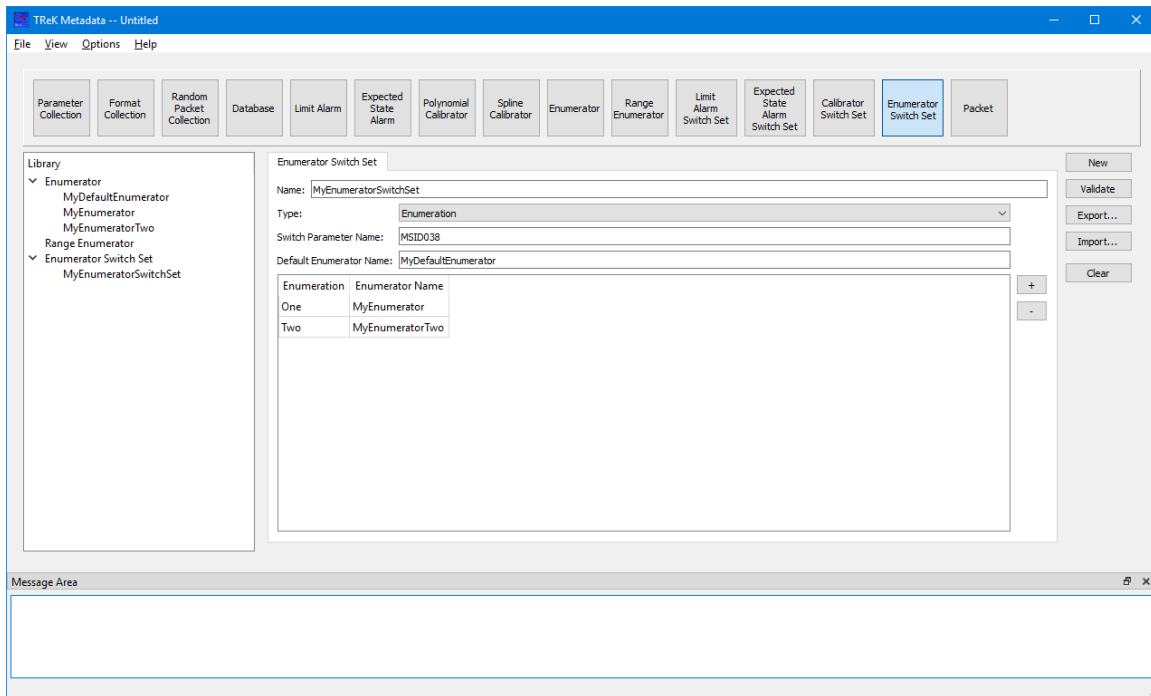
The type menu is used to specify the type of Enumerator Switch Set.

Default Enumerator Name

The default enumerator name field is used to display the name of the default enumerator. This must be the name of an enumerator or a range enumerator that exists in the `trek_workspace`.

Set List

The Set List is used to enter set information for the Enumerator Switch Set. The + (plus) button is used to add a row to the list and the – (minus) button is used to delete a row from the list. Set information can be entered directly into the list as shown in Figure 31. The Set List area will be configured based on switch type.



**Figure 31 Populated Enumerator Switch Set**

The following functions are available when working with an Enumerator Switch Set:

#### New

New provides the capability to clear the existing Enumerator Switch Set information.

#### Validate

Validate provides the capability to validate the Enumerator Switch Set information.

#### Export

Export provides the capability to save the Enumerator Switch Set to a file.

#### Import

Import provides the capability to load an Enumerator Switch Set from a file. When an Enumerator Switch Set is imported the information is displayed on the Enumerator Switch Set tab. To store any modifications back to the file, the Enumerator Switch Set must be exported.

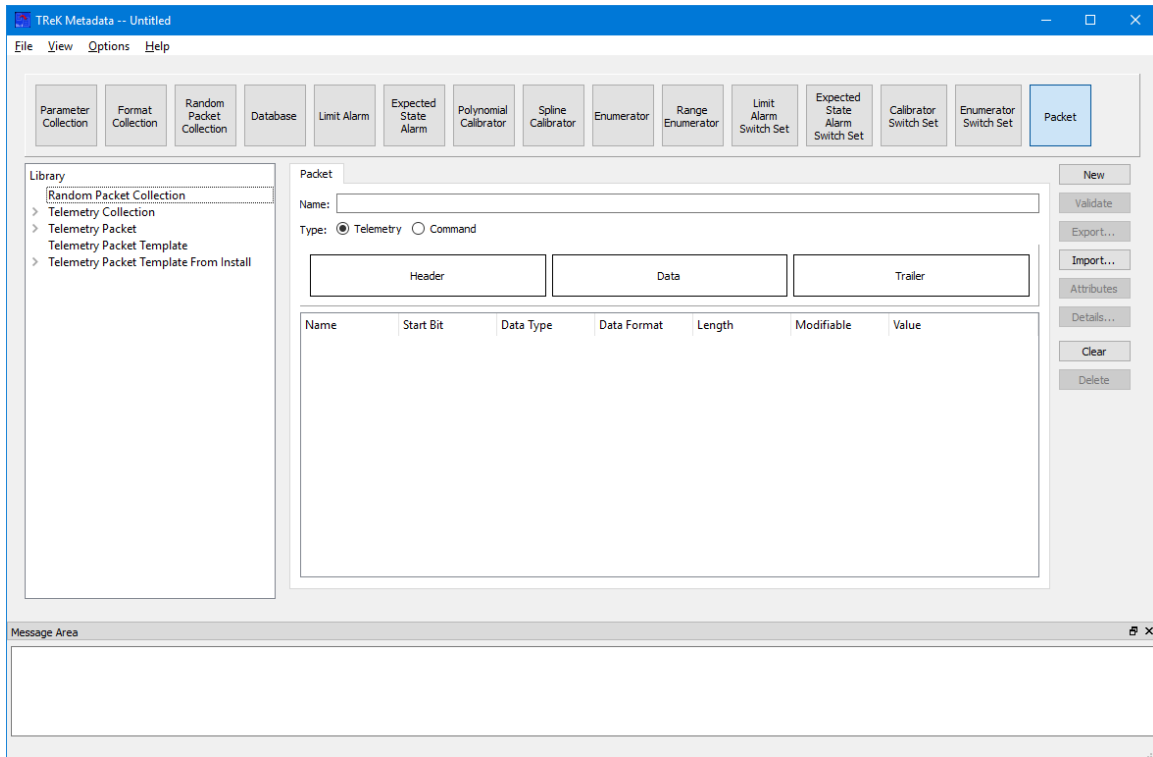
#### Clear

Clear provides the capability to clear the Work Area.

## **6.15 Packet**

The Packet configuration provides the capability to work with a Packet. Figure 32 shows the Main Window in the Packet configuration.





**Figure 32 Packet Configuration**

The Main Window Library Area is configured to provide access to items you can use to create or modify a packet. On the left hand side of the Main Window you will see the Library Area. In the middle of the Main Window, the Work Area provides a place to define the details of your packet. On the right hand side of the Main Window you will see a set of buttons that provide various capabilities applicable to the Packet you are working on. Each is described below.

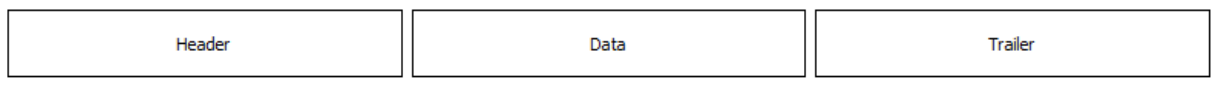
### Library Area

The Library Area is configured to provide access to items you can use to create or modify a Packet. The Telemetry Packet Template From Install list provides access to packet templates that are installed with the TREK software. You can create a packet from scratch. However, it is much easier to use a packet template and save yourself some work. There is also a Command Packet Template From Install. A packet template is a packet that includes pre-populated zones and packet attributes corresponding to the specific type of packet. For example, a CCSDS packet template contains a CCSDS Header and the following packet attributes: a Counter parameter, an APID Identifier, a Length parameter, and a Timestamp Parameter. By using a template, you can start your packet definition with all that information already defined. The Telemetry Collection or Command Collection list is configured to provide access to existing Parameter Collections stored in the `trek_workspace`. The Telemetry Packet or Command Packet list is configured to provide access to existing Packets stored in the `trek_workspace`. When you create a Parameter Collection or Packet and export it to the `trek_workspace`, it will

automatically be added to the Parameter Collection list or Packet list. The Random Packet Collection can be used to add a Random Packet Collection to a telemetry packet. The Telemetry Packet Template and Command Packet Template lists display user defined packet templates that are stored in the `trek_workspace`. The Library Area only displays items stored in the `trek_workspace`. If you need to work on an item outside of the `trek_workspace`, you will need to import the item using the appropriate configuration area.

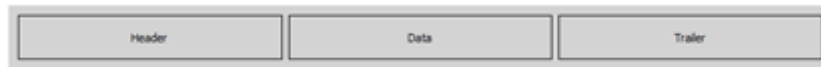
### Work Area

The Work Area provides a place to define the details of your packet. Notice the rectangle that contains three smaller rectangles with one for each zone of the Packet (Header, Data, and Trailer) as shown in Figure 33.



**Figure 33 Packet Drop Zones**

These rectangles are “Drop” zones. The large rectangle is a drop zone for the Entire Packet. If you drop a Packet Template or a Packet on the large rectangle, this will populate the entire Packet. If you drop a Packet or a Parameter Collection on one of the individual packet zones, that zone of the Packet will be updated. The drop zones will highlight so you can verify you are dropping the item in the correct location. Figure 34 shows what the “Entire Packet” drop zone looks like when it is highlighted. Figure 35 shows what the “Data Zone” drop zone looks like when it is highlighted.



**Figure 34 Entire Packet Drop Zone Highlighted**



**Figure 35 Data Zone Drop Zone Highlighted**

### Button Area

On the right hand side of the Main Window you will see a set of buttons that provide various capabilities applicable to the Packet you are working on (e.g., Validate to validate the Packet or Export to export the Packet).

The Work Area provides the capability to define the following properties for the Packet:

### Name

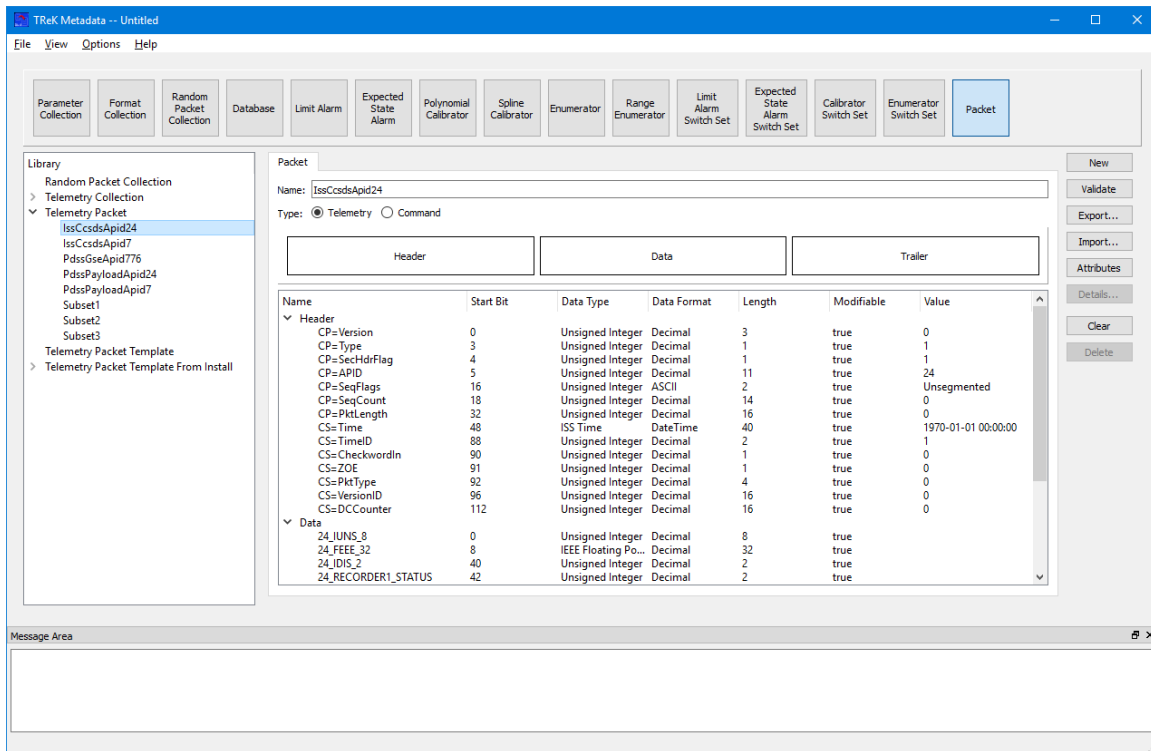
The name field is used to enter the name of the Packet.

## Type

The type selection is used to identify the type of Packet: Telemetry or Command.

## Packet Contents List

The Packet Content list is used to show the contents of the Packet. Figure 36 shows an example of a Packet displayed in the Packet Contents List.



**Figure 36 Packet Contents**

The Metadata application uses Drag and Drop to move items from the Library Area into the Work Area.

To create or modify an existing Packet, you can drag items from the Library Area and drop them into one of the drop zones as described above. This will update the Packet information in the Work Area.

## Packet Tips and Tricks

- If you drop a Packet Template or a Packet on the large rectangle, this will populate the entire Packet.
- If you drop a Packet or a Parameter Collection on one of the individual packet zones, that zone of the Packet will be updated.
- If you use your right mouse button you can access a context sensitive pop-up menu when selecting a Header Zone, Data Zone, or Trailer Zone in the list.

This menu will provide capabilities such as Add Header, Add Data, Add Trailer, Replace, and Delete. This provides the capability to add, modify, or delete child zones.

The following functions are available when working with a Packet:

New

New provides the capability to clear the existing Packet information.

Validate

Validate provides the capability to validate the Packet information.

Export

Export provides the capability to save the Packet to a file.

Import

Import provides the capability to load a Packet from a file. When a Packet is imported the packet information is displayed on the Packet tab. To store any modifications back to the file, the Packet must be exported.

Attributes

Attributes provides the capability to define Packet Attributes. Please reference section 6.19 for details.

Details

Provides details about the selected item.

Clear

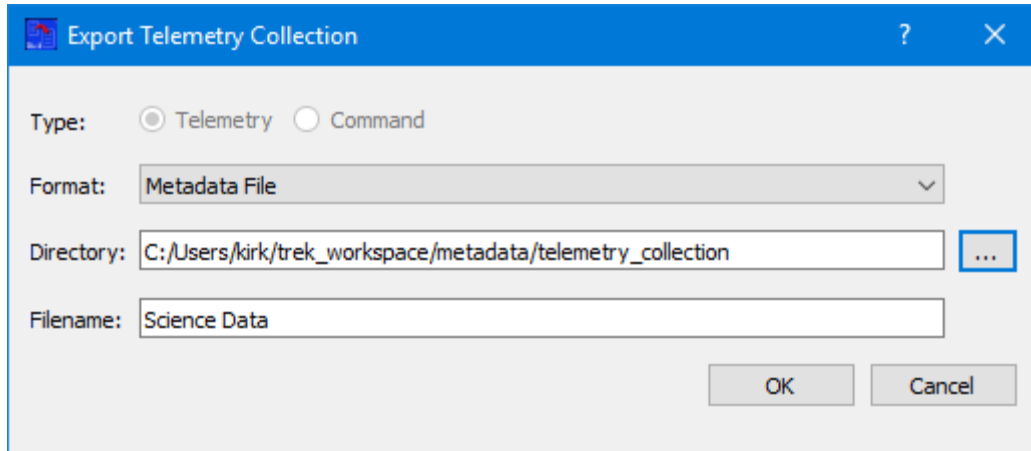
Clear provides the capability to clear the Work Area.

Delete

Delete provides the capability to delete a selected zone.

## **6.16 Export**

The Export dialog is shown in Figure 37. This dialog is context sensitive and will show the Export Options available based on the configuration of the application.



**Figure 37 Export Dialog**

Each field is described below:

#### Format

The Format menu provides the capability to select the format of the file.

#### Directory

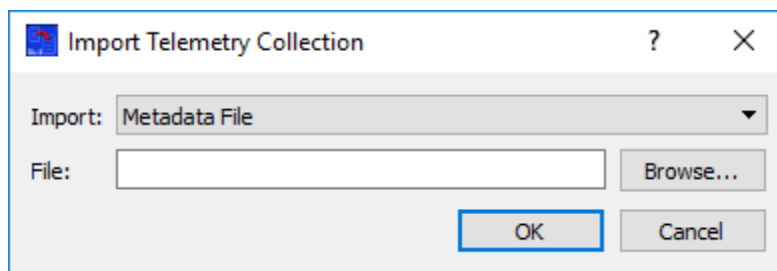
The Directory field provides the capability to enter the Directory location for the exported element. It defaults to the appropriate directory in the trek\_workspace.

#### Filename

The Filename field provides the capability to enter the filename for the exported item. It will default to the text entered into the Name field in the Work Area.

### **6.17 Import**

The Import dialog is shown in Figure 38. This dialog is context sensitive and will show the Import Options available based on the configuration of the application.



**Figure 38 Import Dialog**

Each field is described below:

### Format

The Format menu provides the capability to identify the format of the file. If the file does not match the format identified, the import will fail.

### File

The File field provides the capability to enter the absolute path for the item to import.

## **6.18 Parameter Details**

The Parameter Details dialog is shown in Figure 39. The Parameter Details dialog provides access to the properties of the selected parameter. For information about the items in this dialog please reference the TReK Data library parameter class definition.

Parameter Details

Name:

Alias:

Owner:

General Description Alarm Calibrator Enumerator

Start Bit:   Multisyllable

Syllable #	Start Bit	Length (bits)

+

-

Data Format:

Data Type:

Length (bits):

Variable Length:

Modifiable:

Value:

Engineering Units:

Number Samples:

Byte Order:

Preferences

Calibrate Before Alarm Check

Continue On Range Error

OK Cancel

**Figure 39 Parameter Details Dialog**

Note: When the Multisyllable checkbox is checked, the Start Bit field is not used and the field is set to read-only. Syllables numbers start at 1. The total of the syllable lengths must equal the overall parameter length.

## 6.19 Packet Attributes

The Packet Attributes dialog is shown in Figure 40. The Packet Attributes dialog provides the capability to define one or more attributes in a packet. For details on Packet Attributes please reference the TReK Concepts document. Each tab contains a checkbox

to indicate if the Packet Attribute should be set in the Packet. If the checkbox is set, all the data entered on the tab will be validated and the attribute will be added to the Packet.

**Figure 40 Packet Attributes Dialog**

## 6.20 Add EHS PDSS Payload Pass-Thru Packet to TReK Database

The Add EHS PDSS Payload Pass-Thru Packet to TReK Database dialog is shown in Figure 41. This capability is available from the Options menu and is used to add an EHS PDSS Payload pass-thru packet to a TReK database. You can choose to add the pass-thru packet to an existing database or a new database. If your packet is defined as a pass-thru packet, you can use the TReK API to retrieve the header parameters or the data zone portion of the packet, but not any of the individual parameters in the data zone of the packet. Once you have added a pass-thru packet to a TReK Database, you can use capabilities on the Metadata application's Database tab to export the packet definition to a TReK metadata file.



**Figure 41 Add EHS PDSS Payload Pass-Thru Packet to TReK Database Dialog**

Each field is described below:

Filepath

This is the absolute path to an existing TReK telemetry database.

Name

This is the absolute path for the directory to use for the new TReK telemetry database.

Directory

This is the name for the new TReK telemetry database.

APID

This is the APID for the pass-thru packet.

Results

The Results area displays messages about the results of adding the pass-thru packet to the database. Any information, warning, or error messages will be displayed here.

Apply

The Apply button is used to add the pass-thru packet to the database. Any information, warning, or error messages will be displayed in the Results area.

Clear

The Clear button clears all the fields in the dialog.

Close

The Close button closes the dialog.

## 6.21 Convert EHS Partial Database Files Into TReK Database

The Convert EHS Partial Database Files Into TReK Database dialog is shown in Figure 42. This capability is available from the Options menu and is used to import data in EHS partial database files into a new TReK database. The new TReK database is created during the convert. The convert process can take a while if the EHS partial database files contain a large amount of data. You can continue to work on other tasks in the application while the convert is in work.

The dialog box is titled "Convert EHS Partial Database Files to TReK Database". It features a blue header bar with a question mark icon and a close button. The main content area is divided into several sections:

- Type:** Two radio buttons are present: "Telemetry" (which is selected) and "Command".
- TReK Database Information:** This section contains two text input fields: "Name" and "Directory". The "Directory" field has a browse button (three dots) to its right.
- EHS Partial Database Files Information:** This section contains two text input fields: "Directory" and "Prefix". The "Directory" field has a browse button (three dots) to its right.
- Results:** A large, empty rectangular box intended for displaying the results of the conversion process.
- Buttons:** At the bottom of the dialog, there are three buttons: "Convert", "Clear", and "Close".

**Figure 42 Convert EHS Partial Database Files Into TReK Database Dialog**

Each field is described below:

### Type

The Type is used to identify whether Telemetry information or Command information is to be imported.

### Name

The Name field is used to enter the name of the new TReK database that will be created. If the Telemetry radio button is selected, a new TReK Telemetry database will be created.

If the Command radio button is selected, a new TReK Command database will be created.

#### Directory

The Directory field is used to enter the directory where the EHS partial database download files reside. All the files for the convert (import) should be located in one directory.

#### Prefix

Filenames for EHS Partial Database files with telemetry information contain a prefix number. This number should be entered in the Prefix field. This field is not applicable for command information and will be grayed out when the Command radio button is selected.

#### Results

The Results area is used to display messages about the results of converting the data from the EHS partial database files to import it into the new TReK database. Any information, warnings, or errors will be displayed here.

#### Convert

The Convert button is used to execute the convert (import). Messages related to the convert process will be displayed in the Results area. The process can take a while if the EHS partial database files contain a large amount of data. You can continue to work on other tasks in the application while the convert is in work.

#### Clear

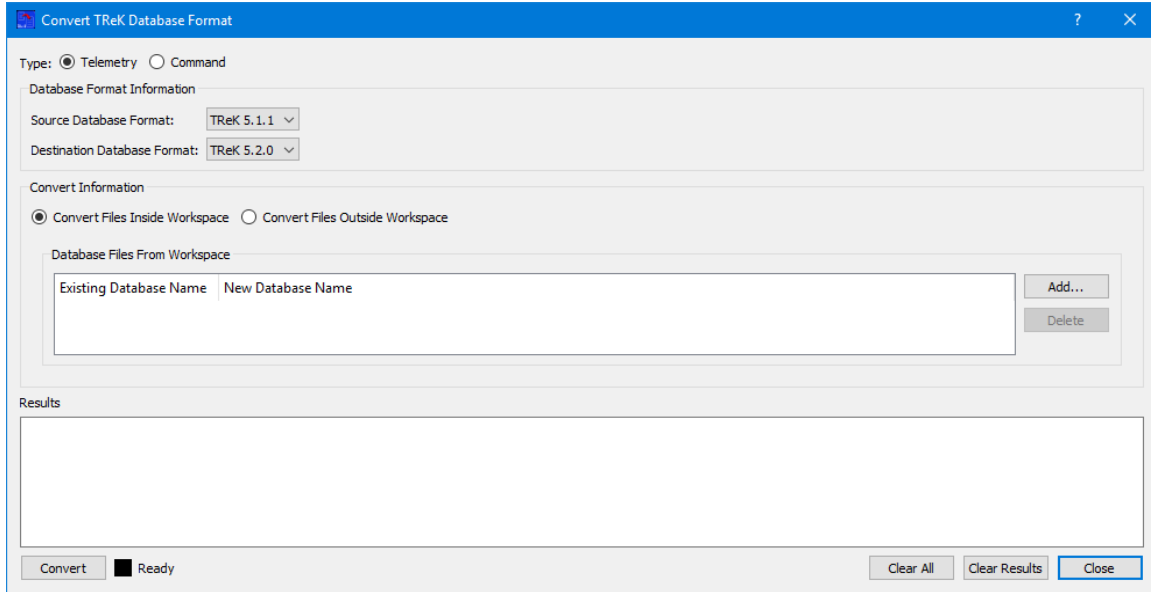
The Clear button clears the Results area.

#### Close

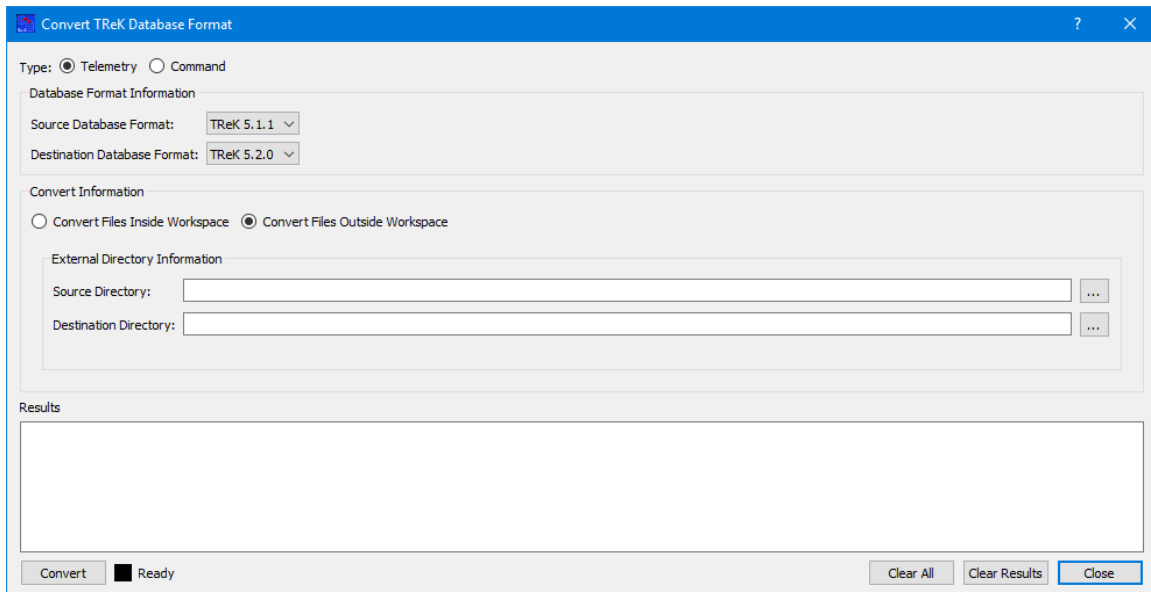
The Close button closes the dialog.

## **6.22 Convert TReK Database Format**

The Convert TReK Database Format dialog is shown in Figure 43 and Figure 44. This capability is available from the Options menu and is used to convert a TReK database from a previous database format to a new database format. A new TReK database is created during the convert. The convert process can take a while if the database file(s) contain a large amount of data. You can continue to work on other tasks in the application while the convert is in work. There are two options available. You can convert database files that reside in the TReK workspace as shown in Figure 43 or you can convert database files that reside outside the TReK workspace as shown in Figure 44.



**Figure 43 Convert TReK Database Format (Inside Workspace)**



**Figure 44 Convert TReK Database Format (Outside Workspace)**

Each field is described below:

### Type

The Type identifies whether a Telemetry database or Command database is to be converted.

### Source Database Format

Identifies the format of the database to convert.

#### Destination Database Format

Identifies the format for the new database.

#### Convert Files Inside Workspace

Specifies to convert files that exist inside the TReK workspace.

#### Convert Files Outside Workspace

Specifies to convert files that exist outside the TReK workspace.

#### Database Files From Workspace

This list identifies existing files in the TReK workspace to be converted. The **Existing Database Name** column will display the name of the file that is added to the list. The corresponding **New Database Name** column will display the existing filename with the new format information appended to the end of the name. For example, if the existing filename is TelemetryDatabase.db, the new default filename will be TelemetryDatabase520.db. The new filename can be modified by double clicking in the cell and editing the name.

#### Add

The Add button is used to browse the TReK workspace and select existing database files to convert. The Add will only add existing files located in a TReK workspace metadata database directory that have a .db extension. The Add will not add duplicate items to the list.

#### Delete

The Delete button is used to delete selected items in the list.

#### Source Directory

The Source directory is a directory outside the TReK workspace that contains one or more TReK databases to convert. The ... button can be used to browse and select a directory.

#### Destination Directory

The Destination directory is a directory outside the TReK workspace where the new databases will be created by the convert. The ... button can be used to browse and select a directory. The Destination directory must empty before the convert can be performed.

#### Results

The Results area is used to display messages about the results of the convert process. Any information, warnings, or errors will be displayed here.

#### Convert

The Convert button is used to perform the convert. Messages related to the convert process will be displayed in the Results area. The process can take a while if the database

files contain a large amount of data. You can continue to work on other tasks in the application while the convert is in work.

### Clear All

The Clear All button clears all the fields in the dialog (this includes all the fields in the Database Files From Workspace and External Directory Information areas).

### Clear Results

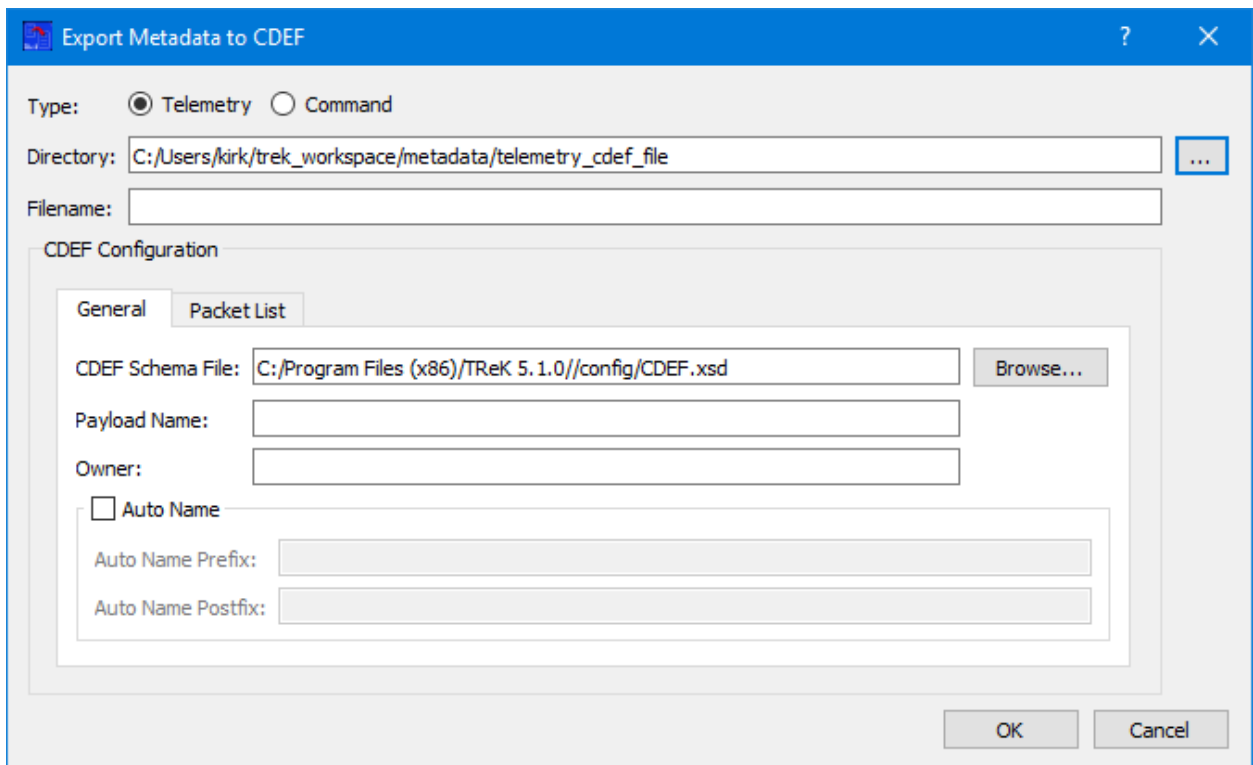
The Clear Results button only clears the Results area.

### Close

The Close button closes the dialog.

## 6.23 Export Metadata to CDEF

The Export Metadata to CDEF dialog is shown in Figure 45. This capability is available from the Options menu and is used to export one or more telemetry or command packets into a Common Data Exchange Format (CDEF) file.



**Figure 45 Export Metadata to CDEF Dialog**

Each field is described below.

### Directory

The Directory field provides the capability to enter the Directory location for the exported element. It defaults to the appropriate directory in the trek\_workspace.

### Filename

The Filename field provides the capability to enter the filename for the exported item.

The CDEF Configuration area provides the capability to enter CDEF specific information. Most of the information collected is to allow you to easily enter information that is required in the CDEF file, but is not necessarily required in the internal TReK files and database. Each field is described below.

#### 6.23.1 General Tab

The General tab is used to enter general information about the CDEF export.

### CDEF Schema Location

This field is used to identify the location of the CDEF Schema. The Browse button can be used to browse the local file system for the file location.

### Payload Name

This field is used to identify the Payload Name assigned by the ISS Program. If the data being exported was previously imported from CDEF, this field may be left blank.

### Owner

This field is used to identify the Owner for the telemetry data. This is only used when an owner is not available for an individual item (e.g., parameter). If one already exists, it will not be overwritten. If the data being exported was previously imported from CDEF, this field may be left blank.

### Auto Name Checkbox

Check the Auto Name Checkbox if auto naming should be used. If this is checked, the Auto Name Prefix and Auto Name Postfix are required. The ISS Program assigns an eight character name to payloads. If you did not use that name when creating you metadata for TReK, you can use this feature to have those names automatically generated. The names you provided for the parameters will be set to the 'alias' for the parameter to preserve more meaningful names.

### Auto Name Prefix

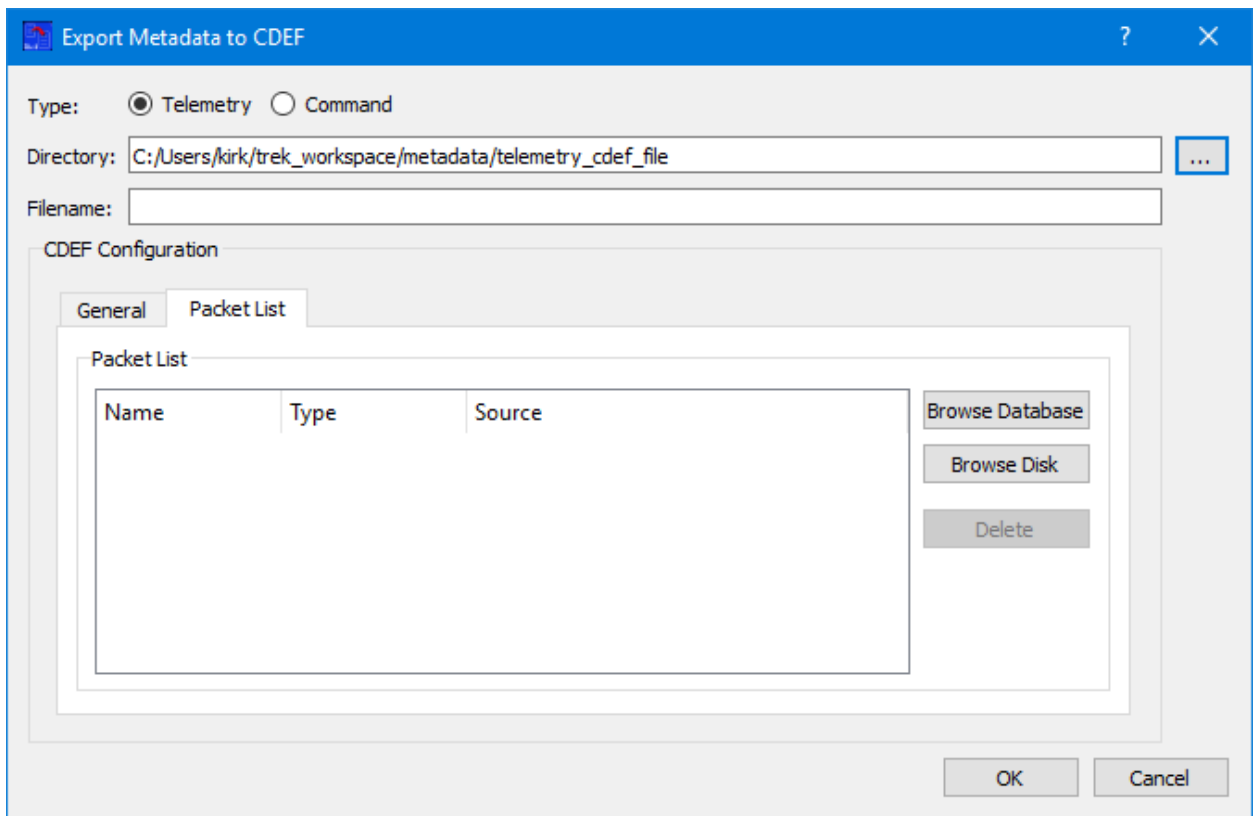
This field is used to enter the Auto Name Prefix information.

### Auto Name Postfix

This field is used to enter the Auto Name Postfix information. The postfix is a single character (typically 'U') that is added as the last character of the parameter name.

### 6.23.2 Packet List Tab

The Packet List tab is used to identify one or more packets to be included in the CDEF export. It is shown in Figure 46. The Browse Button is used to browse a TReK Database to select and add a packet to the list. The Browse Disk button is used to browse the local file system to select and add a packet using a TReK metadata file definition. The Delete button is used to delete an item from the list. If the export is for telemetry, all payload telemetry metadata information to be shared across systems (ISS, POIC, TReK etc.) must be included in the CDEF file. Many payload teams will only need to include health and status metadata. If the export is for command, all payload command metadata information to be shared across systems (ISS, POIC, TReK etc.) must be included in the CDEF file.

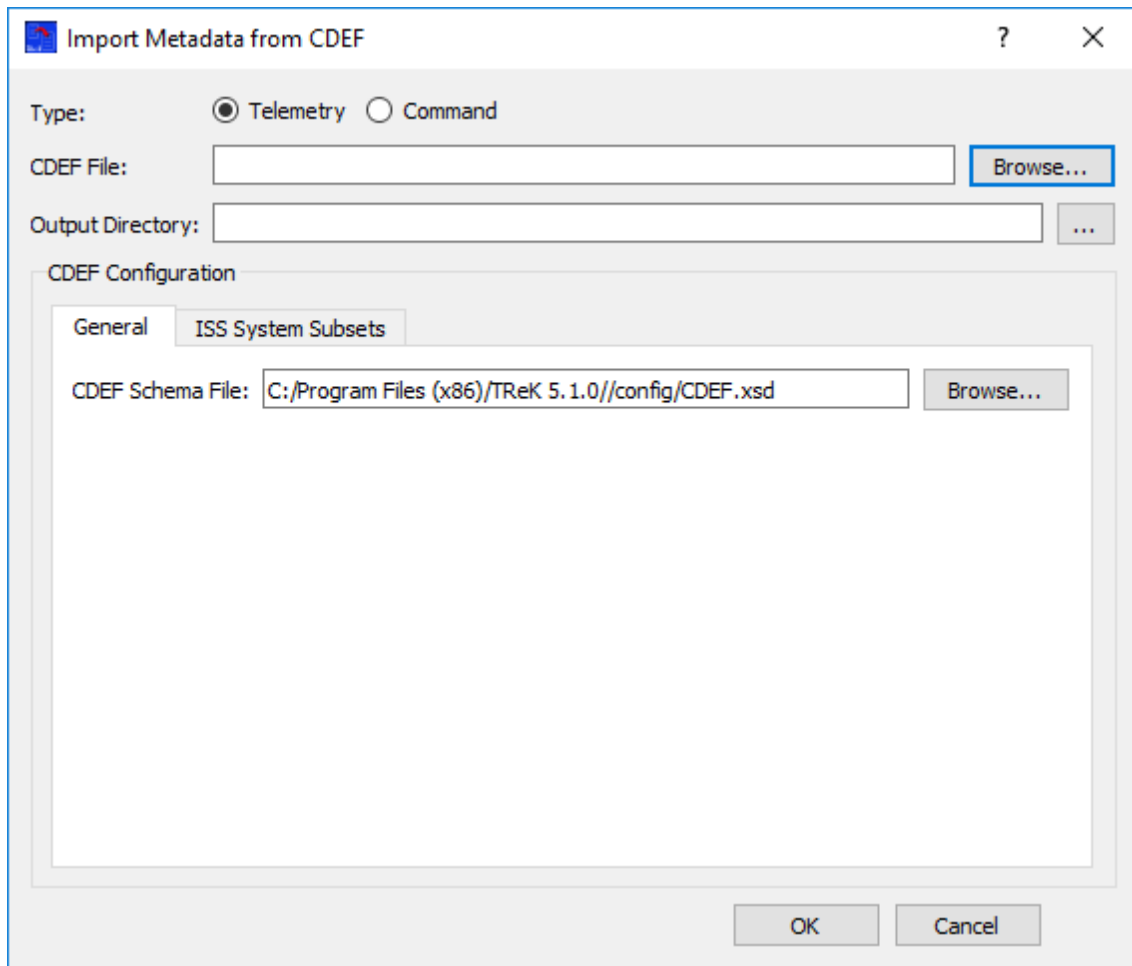


**Figure 46 Export Metadata to CDEF (Packet List Tab)**

## 6.24 Import Metadata from CDEF

The Import Metadata to CDEF dialog is shown in Figure 47 Import Metadata from CDEF. This capability is available from the Options menu and is used to import one or more telemetry or command packets from a Common Data Exchange Format (CDEF) file.





**Figure 47 Import Metadata from CDEF**

Each field is described below.

#### CDEF File

The CDEF File to import.

#### Output Directory

The Directory field provides the capability to enter the Directory location for the TReK metadata files generated during the import. It defaults to the appropriate directory in the `trek_workspace`. The metadata filenames will contain the packet type and APID for telemetry data and the command name for command data.

*Note: If you select a directory different than the default for exporting telemetry metadata, some information will still be written in the `trek_workspace` to allow for editing of the lowest level information. Files will be created in the `telemetry_collection`, `telemetry_packet`, and `random_packet_collection` subdirectories.*

The CDEF Configuration area provides the capability to enter CDEF configuration information. Most of the information collected is to allow you to easily enter information that is required to perform the CDEF Import. Each field is described below.

#### 6.24.1 General Tab

The General tab is used to enter general information about the CDEF import.

##### CDEF Schema Location

This field is used to identify the location of the CDEF Schema. The Browse button can be used to browse the local file system for the file location.

#### 6.24.2 ISS System Subsets Tab

The ISS Systems Subsets tab is used to add ISS system subsets to APIDs in the CDEF Import to allow processing of health and status data during standalone testing and/or flight. It is shown in Figure 48. There are two options to add the subsets to the imported metadata.

The default option adds the user specified subsets in addition to any subsets provided in the CDEF file. The + (plus) button is used to add a row to the list. The – (minus) button is used to delete a row from the list. The Subset information can be entered directly into the list. The list should default to the ISS system subsets needed, but the lengths may change if the ISS system software is updated. The default lengths are those known at the time of this TReK release.

The second option reads the information about subsets from EHS partial database files. These are the same files used in Section 6.21, but does not require converting the files into a TReK telemetry database. Subsets defined in the CDEF file will replace any data from the EHS partial database files. Only minimal information about other subsets is added to the resulting metadata file.

Since the number of subsets for flight is very large and changes at least a couple of times a year, this option is best for importing CDEF to process flight data. It can be used for test data as well, but the first option of specifying the few subsets needed for testing eliminates the need to get the EHS partial database files. The fields needed for this option are described below:

##### Directory

The Directory field is used to enter the directory where the EHS partial database download files reside.

##### Prefix

Filenames for EHS Partial Database files with telemetry information contain a prefix number. This number should be entered in the Prefix field.

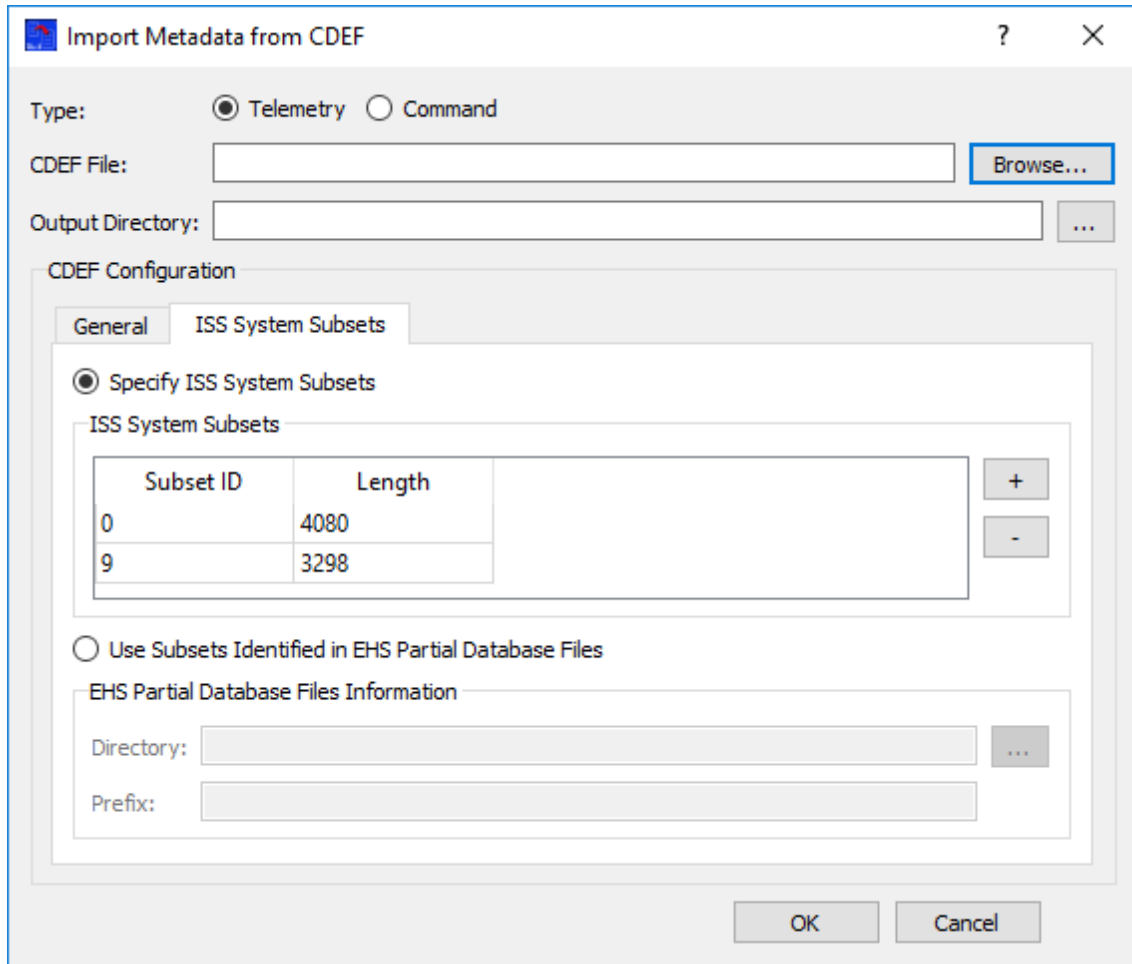


Figure 48 Import Metadata from CDEF (ISS System Subsets Tab)

## 6.25 Command Data Exchange Format Information

The capabilities provided by TReK are not a 100% match for the information that can be exchanged using CDEF. In some cases, CDEF has information that does not equate to something within TReK. In other cases, TReK provides additional capabilities that cannot be represented in CDEF. When information cannot be exported from TReK or imported into TReK, warning and error messages are generated as appropriate.

Warning messages are generated when the import or export code determines the item(s) identified in the message has the potential to cause information to be lost or modified.

Error messages are generated when the import or export code cannot successfully perform an action. This can be due to differences in capabilities supported by TReK and CDEF. The error wording should provide information on the item(s) causing the issues. In some cases errors do not prevent files from being generated.

### 6.25.1 Export Differences

The following provides a high level description of some capabilities in TReK that do not have a corresponding item in CDEF.

- TReK provides additional data types and lengths that are not supported by CDEF (e.g., 64-bit integers).
- Only ISS CCSDS and PDSS Payload packet types are supported by CDEF.
- CDEF limits the number of points allowed for spline calibration and the order of polynomial calibration.
- TReK allows names longer than the CDEF 13 character requirement. See the auto naming feature when exporting data to help meet this requirement.
- Other items such as descriptions have length limits. TReK will truncate descriptions as needed to meet this requirement. A warning message will be generated.

### 6.25.2 Import Differences

The following provides a high level description of some items in CDEF that do not have a corresponding capability in TReK.

- Some data types cannot be represented in TReK. None of the data types are expected to be used by ISS payload developers as many are left over from support of the Spacelab and Space Shuttle programs. TReK will store these data types internally as either unsigned integers or undefined bytes, but will restore the data type to the original upon export.

## 6.26 User Defined C Structure

If a C structure is used to define telemetry or command data in payload code, the C structure can be imported into TReK to define the metadata. A C structure is read into a Parameter Collection which can then be inserted into any Packet template to complete the definition. You can edit the Parameter Collection to add additional information as needed prior to inserting it into the Packet template.

### *Allowed Types*

The allowed types of data within the structure are more restrictive than the types allowed by the TReK. Additional types can be supported upon request. Currently all data is assumed to be byte aligned (packed). The allowed data types and their corresponding data types and lengths in TReK are shown in the table below. Arrays are supported for all data types. If the translation to the TReK data type differs for an array, the array type is listed separately.

C Type	TReK Data Type	Length (bits)
char	DT_TWOS_COMPLEMENT	8
char [n]	DT_NULL_TERMINATED_STRING	8*n
double	DT_IEEE_FLOATING_POINT	64

float	DT_IEEE_FLOATING_POINT	32
int	DT_TWOS_COMPLEMENT	32
int8_t	DT_TWOS_COMPLEMENT	8
int16_t	DT_TWOS_COMPLEMENT	16
int32_t	DT_TWOS_COMPLEMENT	32
int64_t	DT_TWOS_COMPLEMENT	64
long	DT_TWOS_COMPLEMENT	32
long long	DT_TWOS_COMPLEMENT	64
short	DT_TWOS_COMPLEMENT	16
uint8_t	DT_UNSIGNED_INTEGER	8
uint16_t	DT_UNSIGNED_INTEGER	16
uint32_t	DT_UNSIGNED_INTEGER	32
uint64_t	DT_UNSIGNED_INTEGER	64
unsigned char	DT_UNSIGNED_INTEGER	8
unsigned char [n]	DT_UNDEFINED_BYTES	8*n
unsigned int	DT_UNSIGNED_INTEGER	32
unsigned long	DT_UNSIGNED_INTEGER	32
unsigned long long	DT_UNSIGNED_INTEGER	64
unsigned short	DT_UNSIGNED_INTEGER	16

### ***Byte Order***

When importing a C structure into TReK you must specify how byte order of the data types within the structure should be interpreted. The byte order is for the system either sending the data to TReK or processing the data from TReK. The allowed byte order is big endian or little endian.

### ***How a C Structure is Interpreted***

The easiest way to show how a C structure is interpreted is with a simple example. Consider the structure below:

```
struct first
{
    int8_t v1;
    uint16_t v2;
    float v3;
};
```

The structure will be written to a Parameter Collection XML file based on the name of the structure. In this case the file will be “first.xml”. The Parameter Collection will consist of three parameters. Each parameter name will be the variable name (v1, v2, v3). A simple table shows some of the important attributes that are set for each parameter:

<b>Name</b>	<b>Data Type</b>	<b>Length</b>	<b>Start Bit</b>
v1	DT_TWOS_COMPLEMENT	8	0
v2	DT_UNSIGNED_INTEGER	16	8
v3	DT_IEEE_FLOATING_POINT	32	24

### ***Enumerations***

You can use enumerated types in your structures. All enumerations are interpreted as 32-bit unsigned integers. Enumerations can be defined with or without values. The enumerations shown below are all valid:

```
enum my_enum{ one = 1, two, three=777 };

enum my_enum2 { four=4, five };

enum my_enum3
{
    six,
    seven
};

typedef enum
{
    eight,
    nine
} my_enum4;

typedef enum{ten,eleven,twelve}my_enum5;
```

### ***Nesting of Structures***

It is possible to nest structures. Nesting of structures produces names that include the nesting variables. Again a simple example is probably the best way to understand:

```
struct position
{
    double x;
    double y;
    double z;
};

struct locations
{
    struct position start;
    struct position end;
};
```

Two separate files will be produced in this example (position.xml and locations.xml). It is likely that the only XML file you really need is the top level structure (locations.xml). TReK produces files for all structures found within a file.

<b>Name</b>	<b>Data Type</b>	<b>Length</b>	<b>Start Bit</b>
start.x	DT_IEEE_FLOATING_POINT	64	0
start.y	DT_IEEE_FLOATING_POINT	64	64
start.z	DT_IEEE_FLOATING_POINT	64	128
end.x	DT_IEEE_FLOATING_POINT	64	192
end.y	DT_IEEE_FLOATING_POINT	64	256
end.z	DT_IEEE_FLOATING_POINT	64	320

The resulting Parameter Collection no longer has the nesting of data. Each parameter will be placed at the same level and contain a concatenation of names based on the variables from each structure.

### ***Special Tags***

Special tags can be used in structure comments to override information or provide additional input for the resulting Parameter Collection. Each tag takes the form of:

```
TAG[data]
    TAG is the special tag name
    data is the value for the tag
```

The allowed tags are shown in the table below. Additional tags may be provided in a future release.

<b>Tag Name</b>	<b>Description</b>
NAME	Overrides the variable name and uses the specified value as the name of the parameter
ALIAS	Sets the alias of the parameter to the value specified
DESC	Sets the short description of the parameter to the value specified.
FIXED	Sets the value for the parameter as specified and sets the modifiable flag to false.
MOD	Sets the value for the parameter as specified and sets the modifiable flag to true.
LOW	Sets a low range value as specified.
HIGH	Sets a high range value as specified.

A short example of a structure will show how to use the special tags. The tags must appear on the same line as the variable.

```
struct start_health_and_status
{
    uint16_t cmd_id;        // NAME[CommandId] FIXED[2]
    uint16_t rate;         // DESC[Send data every n seconds] LOW[1] MOD[1]
    char ip_addr[16];      // NAME[DestIpAddress] MOD[192.168.1.6]
    uint16_t dest_port;    // MOD[6200]
    uint16_t id;           // ALIAS[DownlinkId] MOD[3]
};
```

### ***Other Rules to Know***

There are some other things to consider when using this feature.

- The translator from the C structure to Parameter Collection is not a full C parser. It only knows a limited amount of information. It does not have the capability of looking in 'include' files so all of the information about enumerations and structures must be defined in the same file.

- The translator currently does not support any of the standard C structures such as struct tm. These may be added in future releases as time permits or upon user request.

## 6.27 Application Messages

Various types of application messages are generated including information, progress, warning, error, and debug messages. Application messages are stored in memory and written to a temporary log file. The temporary log file is created on application initialization and exists as long as the application is running. It is deleted when you exit the application. The log file is located in the temporary directory provided by the operating system. Only a subset of messages are stored in memory while all messages are written to the temporary log file. The maximum number of application messages stored in memory is controlled by the message storage setting in the Configure Messages dialog. Once the maximum is reached, older messages are deleted to make room for new messages. Setting the maximum value to a large number can impact application performance since it will increase the amount of memory used by the application. Setting this number too low can cause you to miss important messages. The application default was selected to protect against both of these scenarios. Messages stored in memory are displayed in the Main Window Message Area and the Messages dialog. The Messages dialog is shown in Figure 49. The Main Window message area only displays Info, Warning, and Error messages. The Messages dialog displays messages based on the display preferences defined in the Configure Messages dialog. By default, the Messages dialog will display information, progress, warning, and error messages. Columns in the Messages dialog can be sorted by clicking on the column header. The Messages dialog is available from the Options menu.

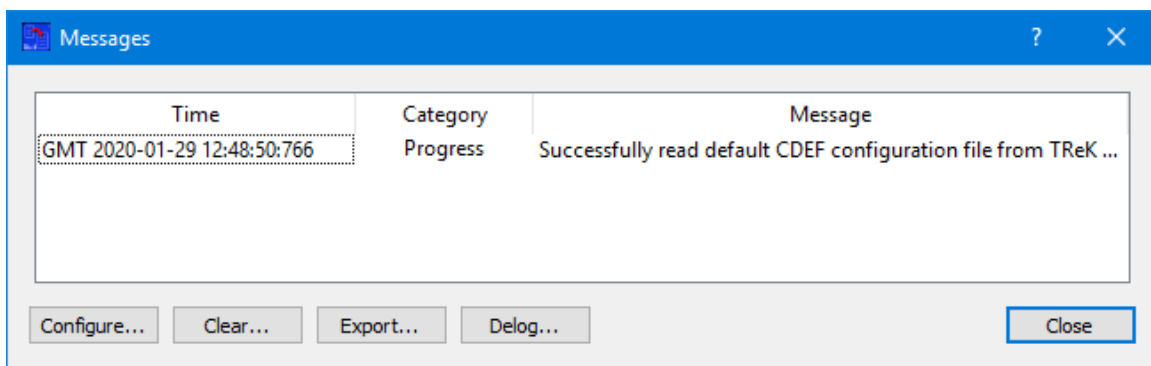


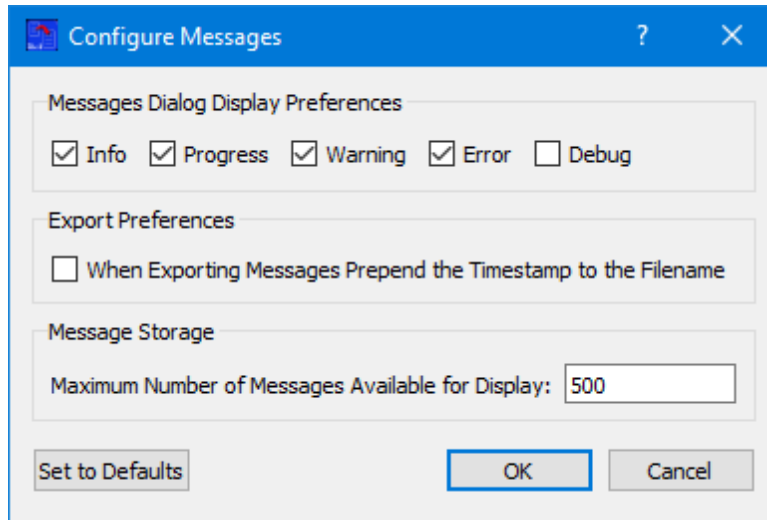
Figure 49 Messages Dialog

### Configure

The Configure button provides access to the Configure Messages dialog shown in Figure 50. This dialog provides access to preferences associated with messages. Display preferences can be set to filter the types of messages (category) displayed in the



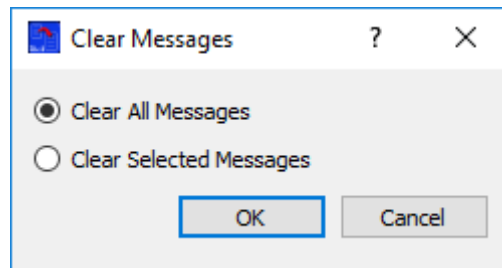
Messages dialog. Export Preferences control how the time tag is added to the filename that is created when messages are exported. See the Export section for details.



**Figure 50 Configure Messages Dialog**

### Clear

The Clear button provides access to the Clear Messages dialog shown in Figure 51. This dialog provides two ways to clear application messages stored in memory. You can clear all the messages or clear selected messages. Once you clear messages, the messages are permanently deleted in all views (Main Window Message Area and the Messages dialog).



**Figure 51 Clear Messages Dialog**

### Export

The Export button provides the capability to save all the application messages currently in memory to a file. When you push the Export button you will be prompted for a directory and filename. Export will save all messages in memory, not just the messages currently displayed in the Messages dialog (i.e. the Display Preferences are not applied). The name you provide for the file will be modified with a time tag that is added to the filename. The time tag indicates the time the file was closed. The default is to append the time tag to the filename. For example:

Filename Input:       messages.txt  
 Filename Output:     messages\_2017-05-07\_13~03~28.txt

If you would like to prepend the time tag to the filename you can set this preference in the Configure Messages dialog. This would result in the following:

Filename Input:       messages.txt  
 Filename Output:     2017-05-07\_13~03~28\_messages.txt

### Delog

The Delog button provides the capability to save all application messages generated since the application was started. Delog will retrieve the messages from the temporary log file. When you push the Delog button you will be prompted for a directory and filename. A timetag is not applied to the filename.

Filename Input:       messages.txt  
 Filename Output:     messages.txt

## **6.28 Application Configuration File**

The Metadata application saves the information entered for each work area.

## **6.29 Application Settings**

The Metadata application saves some settings as application settings each time you exit the application. The next time you run the application, the application will initialize with the previous application settings. The following application settings are saved:

- Application Window Size
- Configure Messages Selections

## **6.30 Application Command Line Arguments**

The Metadata application accepts the following command line arguments:

- `trek_metadata.exe <filename>`

*filename*       to open a configuration file (full path to file)

A value must be wrapped in double quotes if it contains spaces.

Examples:

- `trek_metadata.exe "D:/metadata config.xml"`

➤ trek\_metadata.exe D:/metadata\_config.xml

## **7 FAQ and Troubleshooting**

This section addresses Frequently Asked Questions and provides tips for troubleshooting common gotchas.

No FAQs Yet.