

**TREK**  
**SETTINGS**  
**USER GUIDE**



**January 2023**

Approved for Public Release; Distribution is Unlimited.

## TABLE OF CONTENTS

<u>PARAGRAPH</u>	<u>PAGE</u>
<b>1 Welcome.....</b>	<b>1</b>
1.1 Getting Started .....	1
<b>2 Technical Support.....</b>	<b>1</b>
<b>3 Introduction.....</b>	<b>1</b>
<b>4 Overview of the User Interface .....</b>	<b>2</b>
4.1 Main Window .....	2
4.2 Menus.....	2
<b>5 Quick Start Guides .....</b>	<b>3</b>
5.1 How to Change the TReK Workspace .....	3
5.2 How to Export Settings Information .....	3
<b>6 Details.....</b>	<b>4</b>
6.1 Main Window Area.....	4
6.2 Export Settings Dialog .....	4
6.3 Application Messages .....	5
6.4 Application Settings .....	7
<b>7 FAQ and Troubleshooting .....</b>	<b>8</b>

FIGURES

<u>FIGURE</u>	<u>PAGE</u>
Figure 1 Main Window .....	2
Figure 2 Main Window Area.....	4
Figure 3 Export Settings Dialog .....	5
Figure 4 Messages Dialog .....	6
Figure 5 Configure Messages Dialog .....	6
Figure 6 Clear Messages Dialog.....	7

## 1 Welcome

The Telescience Resource Kit (TReK) is a suite of software applications and libraries that can be used to monitor and control assets in space or on the ground.

The TReK Settings application displays information about TReK settings.

### 1.1 Getting Started

Start with the Introduction which provides an application overview. Next, try the Quick Start Guides for “How Tos” for common functions. For help with details, reference the Details section. See the FAQ and Troubleshooting section for helpful hints and solutions to the common “gotchas”.

## 2 Technical Support

If you are having trouble installing the TReK software or using any of the TReK software, please contact us for technical assistance:

TReK Help Desk E-Mail, Phone & Fax:

E-Mail: [trek.help@nasa.gov](mailto:trek.help@nasa.gov)  
Telephone: 256-544-3521 (8:00 a.m. - 4:00 p.m. Central Time)  
Fax: 256-544-9353

If you call the TReK Help Desk and you get a recording please leave a message and someone will return your call. E-mail is the preferred contact method for help. The e-mail message is automatically forwarded to the TReK developers and helps cut the response time. The HOSC Help Desk (256-544-5066) can provide assistance as needed and is available 24x7.

## 3 Introduction

The TReK Settings application displays information about TReK settings such as the location of the TReK workspace folder and values for environment variables used by the TReK software. The settings are configured during installation and there is no need to change the settings. However, if a need arises, the settings can be changed using capabilities provided by the operating system (e.g. Windows System Properties or Linux login shell). Changing these settings requires administrative privileges.

## 4 Overview of the User Interface

### 4.1 Main Window

The main window contains several areas as shown in Figure 1. The Message Area is a dock window that you can float or dock. To float a dock window, use your left mouse button to click and hold the title area while dragging the window to another area of the screen. To dock, use the title bar to drag the dock window over the main window and drop.

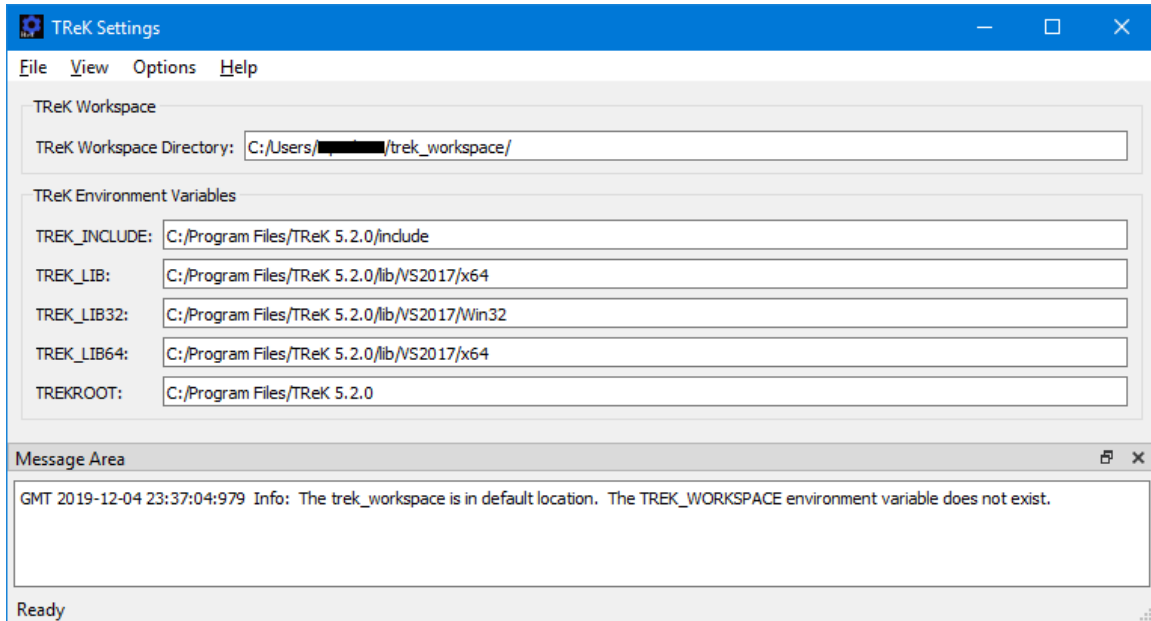


Figure 1 Main Window

#### TReK Workspace

The TReK Workspace area displays information about the current location of the TReK workspace.

#### TReK Environment Variables

The TReK Environment Variables area displays information about TReK environment variables. The environment variables listed will differ on Windows and Linux.

#### Message Area

The Message Area displays important status and error messages. The message area can be cleared using the View menu.

### 4.2 Menus

The TReK Settings application menus are: File, View, Options, and Help. Each of these menus is described in more detail below.

#### File Menu

The File menu provides the capability to exit the application.

#### View Menu

The View menu provides the capability to clear the main window message area and show and hide different areas in the main window.

#### Options Menu

The Options menu provides the capability to export the settings information. It also provides access to the Messages dialog which can be used to display and filter application messages.

#### Help Menu

The Help menu provides access to on-line help and application version information.

## **5 Quick Start Guides**

This section provides “How Tos” for common functions.

### **5.1 How to Change the TReK Workspace**

The following steps describe how to change the location of the TReK Workspace.

1. Exit all TReK software applications, any applications that use the TReK API, and any TReK services.

Note: This is very important. Do not change the TReK Workspace while the TReK software is running.

2. Use the operating system to create an environment variable named “TREK\_WORKSPACE” (without the quotes).

Note: On Windows, use the Windows System Properties Environment Variables. On Linux modify your login shell script.

3. Set the TREK\_WORKSPACE variable value to the directory where you want the workspace to reside. For example: D:\GroundSystemFiles\

Note: The TReK workspace will be created in the new location when you start one of the following applications: Data, Playback, Command, or Metadata.

### **5.2 How to Export Settings Information**

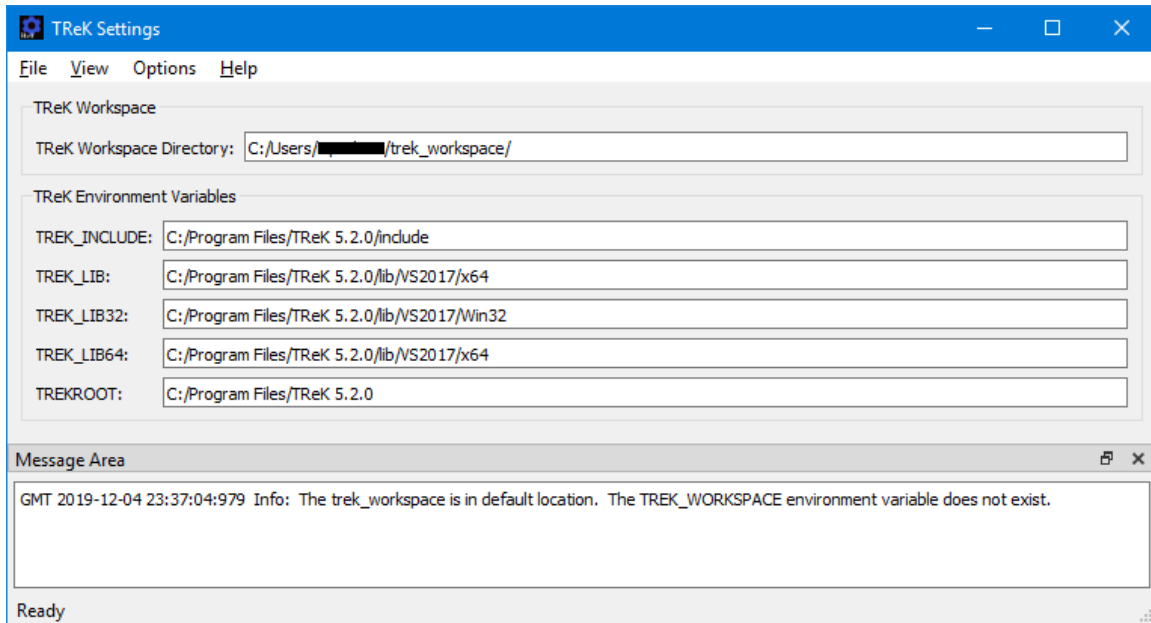
The Export Settings dialog provides the capability to export settings. It is available from the Options menu.

## 6 Details

This section covers various application details.

### 6.1 Main Window Area

The Main Window Area is shown in Figure 2. Each field is described below.



**Figure 2 Main Window Area**

#### TReK Workspace

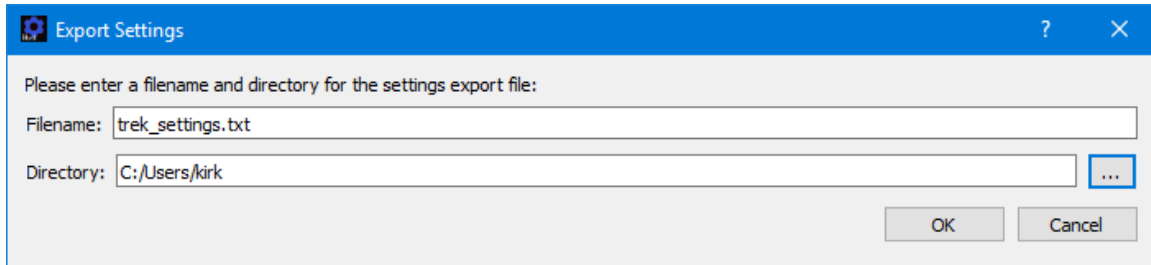
The TReK Workspace Directory displays the location where the TReK software expects to find the TReK workspace.

#### TReK Environment Variables

The TReK Environment Variables area lists all the environment variables used by the TReK software. The environment variables listed will differ on Windows and Linux.

### 6.2 Export Settings Dialog

The Export Settings dialog is shown in Figure 3. This dialog can be used to write the information displayed in the Main Window area to a file.



**Figure 3 Export Settings Dialog**

Each field is described below.

#### Filename

The Filename field is used to enter the filename for the file that will be created.

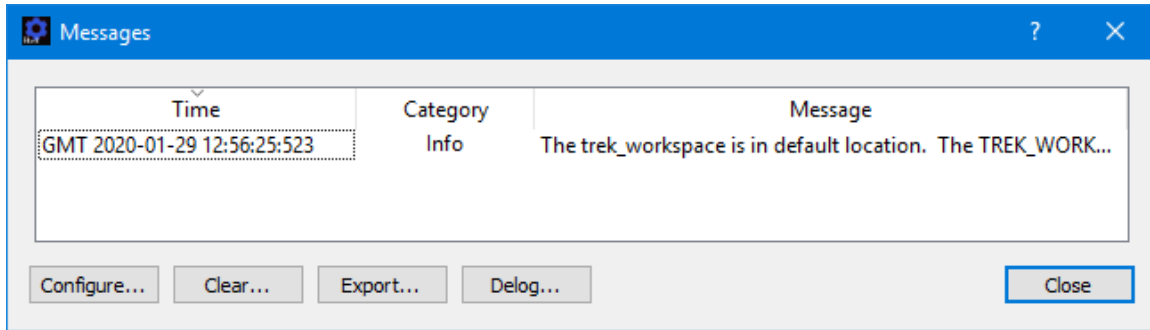
#### Directory

The Directory field is used to enter the directory where the file should be written.

### **6.3 Application Messages**

Various types of application messages are generated including information, progress, warning, error, and debug messages. Application messages are stored in memory and written to a temporary log file. The temporary log file is created on application initialization and exists as long as the application is running. It is deleted when you exit the application. The log file is located in the temporary directory provided by the operating system. Only a subset of messages are stored in memory while all messages are written to the temporary log file. The maximum number of application messages stored in memory is controlled by the message storage setting in the Configure Messages dialog. Once the maximum is reached, older messages are deleted to make room for new messages. Setting the maximum value to a large number can impact application performance since it will increase the amount of memory used by the application. Setting this number too low can cause you to miss important messages. The application default was selected to protect against both of these scenarios. Messages stored in memory are displayed in the Main Window Message Area and the Messages dialog. The Messages dialog is shown in Figure 4. The Main Window message area only displays Info, Warning, and Error messages. The Messages dialog displays messages based on the display preferences defined in the Configure Messages dialog. By default, the Messages dialog will display information, progress, warning, and error messages. Columns in the Messages dialog can be sorted by clicking on the column header. The Messages dialog is available from the Options menu.

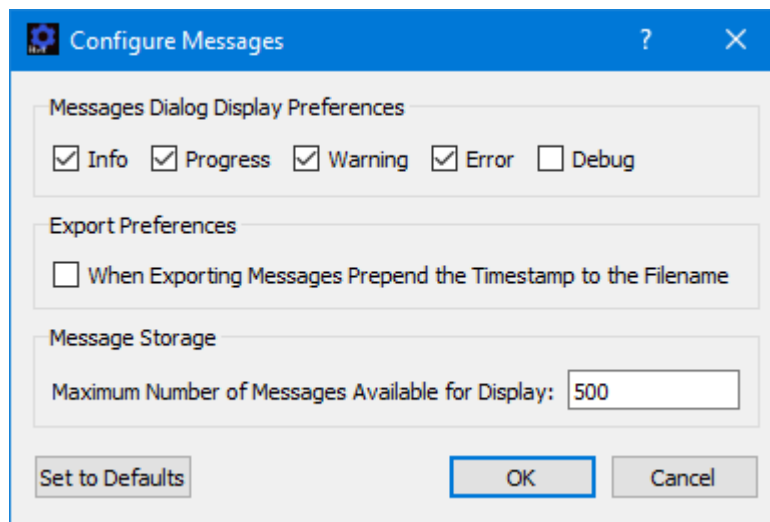




**Figure 4 Messages Dialog**

### Configure

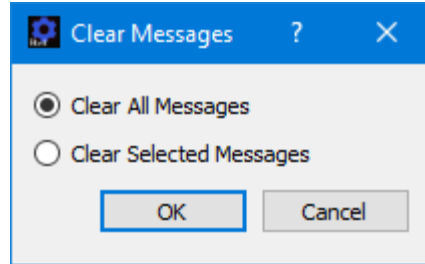
The Configure button provides access to the Configure Messages dialog shown in Figure 5. This dialog provides access to preferences associated with messages. Display preferences can be set to filter the types of messages (category) displayed in the Messages dialog. Export Preferences control how the time tag is added to the filename that is created when messages are exported. See the Export section for details. Message storage defines the maximum number of messages that will be stored in memory while the application is running. Once the maximum is reached, older messages are deleted to make room for new messages. The Set to Defaults button can be used to reset these properties to application defaults.



**Figure 5 Configure Messages Dialog**

### Clear

The Clear button provides access to the Clear Messages dialog shown in Figure 6. This dialog provides two ways to clear application messages stored in memory. You can clear all the messages or clear selected messages. Once you clear messages, the messages are permanently deleted in all views (Main Window Message Area and the Messages dialog).



**Figure 6 Clear Messages Dialog**

### Export

The Export button provides the capability to save all the application messages currently in memory to a file. When you push the Export button you will be prompted for a directory and filename. Export will save all messages in memory, not just the messages currently displayed in the Messages dialog (i.e. the Display Preferences are not applied). The name you provide for the file will be modified with a time tag that is added to the filename. The time tag indicates the time the file was closed. The default is to append the time tag to the filename. For example:

Filename Input:        messages.txt  
 Filename Output:     messages\_2017-05-07\_13~03~28.txt

If you would like to prepend the time tag to the filename you can set this preference in the Configure Messages dialog. This would result in the following:

Filename Input:        messages.txt  
 Filename Output:     2017-05-07\_13~03~28\_messages.txt

### Delog

The Delog button provides the capability to save all application messages generated since the application was started. Delog will retrieve the messages from the temporary log file. When you push the Delog button you will be prompted for a directory and filename. A timetag is not applied to the filename.

Filename Input:        messages.txt  
 Filename Output:     messages.txt

## **6.4 Application Settings**

The Settings application saves some settings as application settings each time you exit the application. The next time you run the application, the application will initialize with the previous application settings. Only one set of settings are saved. If you run multiple instances of the application, the settings in the instance that is exited last will be saved. The following application settings are saved:

- Application Window Size
- Configure Messages Selections

## **7 FAQ and Troubleshooting**

This section addresses Frequently Asked Questions and provides tips for troubleshooting common gotchas.

No FAQs Yet.